



# Quick Installation Guide

5G NR SA/NSA AX3000 Wi-Fi 6 Router

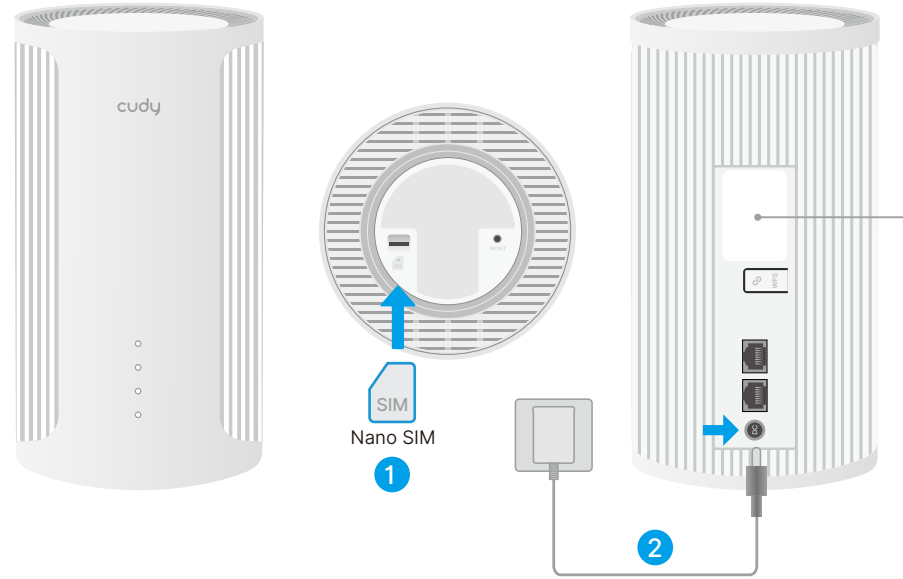
Model: P2

### NEED TECH HELP?

- [www.cudy.com/qr\\_vg\\_lt](http://www.cudy.com/qr_vg_lt)
- [www.cudy.com](http://www.cudy.com)
- [support@cudy.com](mailto:support@cudy.com)
- [www.cudy.com/download](http://www.cudy.com/download)



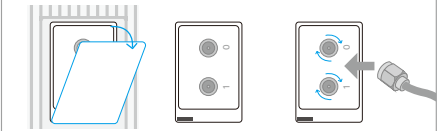
810600521



**1** According to the engraved SIM direction, insert your Nano SIM card into the slot until you hear a clicking sound.

**2** Connect the power adapter to the router, and wait for 2~5 minutes until the system LED turns solid on.

**Note:** If the signal is still too weak indoors, try installing your extension antennas (not included in the box) to the SMA connector and placing the antennas outdoors.



**3** Check the LED.

When the LED is in yellow or white, the router is connected to the cellular network.

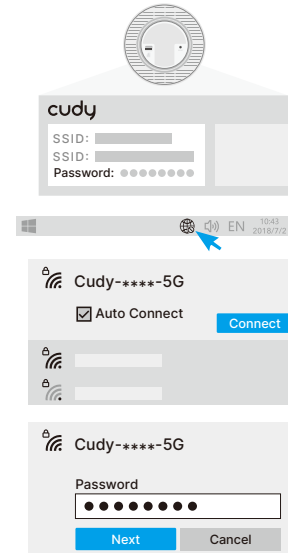
If the LED is in red, please continue to configure the router.

**4** Connect to the router via **A** or **B** method.

**A. Wi-Fi:** Connect your device to the router's Wi-Fi using the SSID (network name) and Password printed on the bottom of the router.

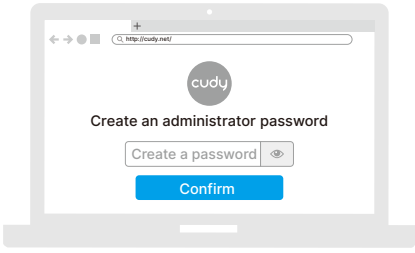
**B. Wired:** Turn off the Wi-Fi on your computer and connect it to the router's **LAN** port via an Ethernet cable.

Name	Status	5G Model
	Off	
	Flash	
	Solid	
	Off	
	Red	
	Yellow	4G/3G
	White	5G/WAN
	Off	
	Flash	
	Solid	
	Off	
	Red	
	Yellow	
	White	

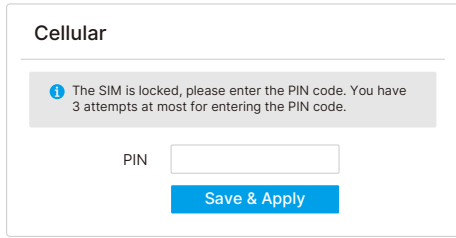


Go to Step 5 and continue.

**5** Launch a browser, enter [cudy.net](http://www.cudy.net) (or [192.168.10.1](http://192.168.10.1)) in the address bar, and create a password to log in.



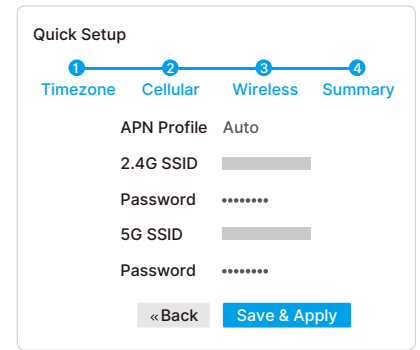
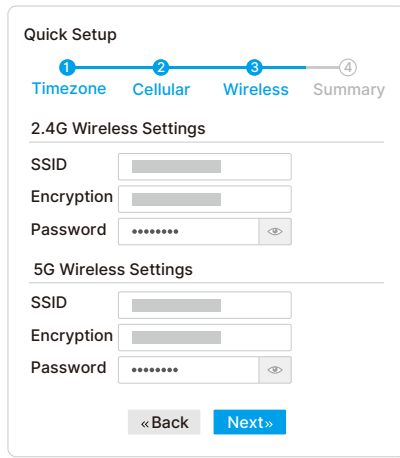
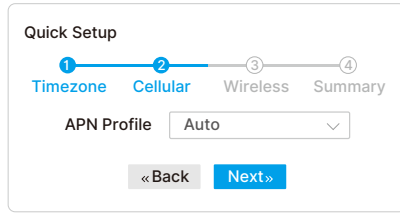
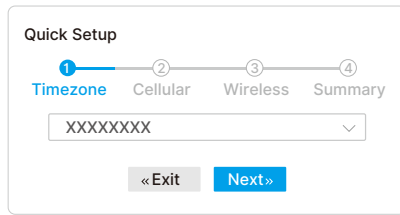
**Note:** If the window as below pops up, please input your SIM PIN or contact your carrier for help.




## EU Declaration of Conformity

- English**  
Cudy hereby declares that this device complies with the essential requirements and other relevant provisions of Directive 2014/30/EU, Directive 2014/35/EU, Directive 2014/53/EU, Directive 2011/65/EU, Directive (EU) 2015/863, Directive 2009/125/EC, Directive (EU) 2023/826, Directive (EU) 2019/1782. The original EU Declaration of Conformity is available at <http://www.cudy.com/ce>.
- Deutsch**  
Cudy erklärt hiermit, dass dieses Gerät den grundlegenden Anforderungen und anderen relevanten Bestimmungen der Richtlinie 2014/30/EU, Richtlinie 2014/35/EU, Richtlinie 2014/53/EU, Richtlinie 2011/65/EU, Richtlinie (EU) 2015/863, Richtlinie 2009/125/EC, Richtlinie (EU) 2023/826, Richtlinie (EU) 2019/1782. Die ursprüngliche EU-Konformitätserklärung findet sich unter <http://www.cudy.com/ce>.
- Español**  
Cudy declara por la presente que este dispositivo cumple con los requisitos esenciales y otras disposiciones pertinentes de las Directivas 2014/30/UE, Directiva 2014/35/UE, Directiva 2014/53/UE, Directiva 2011/65/UE, Directiva (UE) 2015/863, Directiva 2009/125/CE, Directiva (UE) 2023/826, Directiva (UE) 2019/1782. La declaración original de conformidad de la UE está disponible en <http://www.cudy.com/ce>.
- Italiano**  
Cudy dichiara con la presente che questo dispositivo è conforme ai requisiti essenziali e alle altre disposizioni pertinenti delle Direttive 2014/30/UE, Direttiva 2014/35/UE, Direttiva 2014/53/UE, Direttiva 2011/65/UE, Direttiva (UE) 2015/863, Direttiva (UE) 2019/1782, Direttiva 2009/125/CE, Direttiva (UE) 2023/826. La dichiarazione originale di conformità UE è disponibile all'indirizzo <http://www.cudy.com/ce>.
- Franglais**  
Cudy déclare par la présente que cet appareil est conforme aux exigences essentielles et autres dispositions pertinentes des Directives 2014/30/UE, Directive 2014/35/UE, Directive 2014/53/UE, Directive 2011/65/UE, Directive (UE) 2015/863, Directive 2009/125/CE, Directive (UE) 2023/826. La déclaration originale de conformité UE est disponible sur <http://www.cudy.com/ce>.
- Ελληνικά**  
Η Cudy δηλώνει με την παρούσα ότι αυτή η συσκευή συμμορφώνεται με τις βασικές απαιτήσεις και άλλες σχετικές διατάξεις των Οδηγία 2014/30/ΕΕ, Οδηγία 2014/35/ΕΕ, Οδηγία 2014/53/ΕΕ, Οδηγία 2011/65/ΕΕ, Οδηγία (ΕΕ) 2015/863, Οδηγία 2009/125/ΕΕ, Οδηγία (ΕΕ) 2023/826, Οδηγία (ΕΕ) 2019/1782. Η αρχική δήλωση Συμμορφωσης ΕΕ βρίσκεται στη διεύθυνση <http://www.cudy.com/ce>.
- Nederlands**  
Cudy verklaart hierbij dat dit apparaat voldoet aan de essentiële vereisten en andere relevante bepalingen van Richtlijn 2014/30/EU, Richtlijn 2014/35/EU, Richtlijn 2014/53/EU, Richtlijn 2011/65/EU, Richtlijn (EU) 2015/863, Richtlijn 2009/125/EG, Richtlijn (EU) 2023/826, Richtlijn (EU) 2019/1782. De oorspronkelijke EU-conformiteitsverklaring is beschikbaar op <http://www.cudy.com/ce>.
- Português**  
A Cudy declara por meio desta que este dispositivo está em conformidade com os

**6** Follow the step-by-step instructions to finish the **Quick Setup**.



 **Enjoy the Internet!**

requisitos essenciais e outras disposições relevantes das Diretiva 2014/30/UE, Diretiva 2014/35/UE, Diretiva 2014/53/UE, Diretiva 2011/65/UE, Diretiva (UE) 2015/863, Diretiva 2009/125/CE, Diretiva (UE) 2023/826, Diretiva (UE) 2019/1782. A declaração original de conformidade da UE está disponível em <http://www.cudy.com/ce>.

**9. Polski**  
Firma Cudy niniejszym oświadcza, że to urządzenie spełnia zasadnicze wymagania i inne stosowne postanowienia Dyrektywa 2014/30/UE, Dyrektywa 2014/35/UE, Dyrektywa 2014/53/UE, Dyrektywa 2011/65/UE, Dyrektywa (UE) 2015/863, Dyrektywa 2009/125/WE, Dyrektywa (UE) 2023/826, Dyrektywa (UE) 2019/1782. Oryginalna deklaracja zgodności UE znajduje się pod adresem <http://www.cudy.com/ce>.

**10. Türkçe**  
Cudy, bu cihazın aşağıdaki AB Direktiflerinin temel gerekliliklerine ve ilgili hükümlerine uygun olduğunu beyan eder 2014/30/AB Direktifi, 2014/35/AB Direktifi, 2014/53/AB Direktifi, 2011/65/AB Direktifi, (AB) 2015/863 Direktifi, 2009/125/AT Direktifi, (AB) 2023/826 Direktifi, (AB) 2019/1782 Direktifi. Orijinal AB Uygunluk Beyanı belgesi şu adreste bulunabilir <http://www.cudy.com/ce>.

**11. Norsk**  
Cudy erklærer herved at denne enheten er i samsvar med de grunnleggende kravene og andre relevante bestemmelser i Direktiv 2014/30/EU, Direktiv 2014/35/EU, Direktiv 2014/53/EU, Direktiv 2011/65/EU, Direktiv (EU) 2015/863, Direktiv 2009/125/EG, Direktiv (EU) 2023/826, Direktiv (EU) 2019/1782. Den opprinnelige EU-samsvarserklæringen finnes på <http://www.cudy.com/ce>.

**12. Dansk**  
Cudy erklærer herved, at denne enhed er i overensstemmelse med de væsentligste krav og andre relevante bestemmelser i Direktiv 2014/30/EU, Direktiv 2014/35/EU, Direktiv 2014/53/EU, Direktiv 2011/65/EU, Direktiv (EU) 2015/863, Direktiv 2009/125/EG, Direktiv (EU) 2023/826, Direktiv (EU) 2019/1782. Den oprindelige EU-overensstemmelseserklæring kan findes på <http://www.cudy.com/ce>.

**13. Suomi**  
Cudy todistaa täällä, että tämä laite täyttää Direktiivit 2014/30/EU, Direktiivi 2014/35/EU, Direktiivi 2014/53/EU, Direktiivi 2011/65/EU, Direktiivi (EU) 2015/863, Direktiivi 2009/125/EY, Direktiivi (EU) 2023/826, Direktiivi (EU) 2019/1782 oikeellisesti vaatimukset ja muut asiantuulluivat määräykset. Alkuperäinen EU-yhdenmukaisuusvakuutus on saatavilla osoitteessa <http://www.cudy.com/ce>.

**14. Svenska**  
Cudy förklarar härmed att denna produkt uppfyller de grundläggande kraven och andra relevanta bestämmelser i Direktiv 2014/30/EU, Direktiv 2014/35/EU, Direktiv 2014/53/EU, Direktiv 2011/65/EU, Direktiv (EU) 2015/863, Direktiv 2009/125/EG, Direktiv (EU) 2023/826, Direktiv (EU) 2019/1782. Den ursprungliga EU-försäkran om överensstämmelse finns på <http://www.cudy.com/ce>.

**15. Čeština**  
Společnost Cudy tímto prohlašuje, že toto zařízení splňuje základní požadavky a další příslušná ustanovení Směrnice 2014/30/EU, Směrnice 2014/35/EU, SmSměrnice 2014/53/EU, SmSrnice 2011/65/EU, Směrnice (EU) 2015/863, Směrnice 2009/125/ES, Směrnice (EU) 2023/826, Směrnice (EU) 2019/1782. Původní prohlášení o shodě EU je k dispozici na <http://www.cudy.com/ce>.

**16. Slovenčina**  
Spoločnosť Cudy týmto vyhlasuje, že toto zariadenie spĺňa základné požiadavky a ďalšie

příslušné ustanovenia smernice 2014/30/EÚ, smernice 2014/35/EÚ, smernice 2014/53/EÚ, smernice 2011/65/EÚ, smernice (EÚ) 2015/863, smernice 2009/125/ES, smernice (EÚ) 2023/826, smernice (EÚ) 2019/1782. Pôvodné vyhlásenie o zhode EÚ je dostupné na <http://www.cudy.com/ce>.

**17. Magyar**  
Cudy ezennel kijelenti, hogy ez az eszköz megfelel a 2014/30/EU Irányelv, 2014/35/EU Irányelv, 2014/53/EU Irányelv, 2011/65/EU Irányelv, (EU)2015/863 Irányelv, 2009/125/EK Irányelv, (EU)2023/826 Irányelv, (EU)2019/1782 Irányelv alapvető követelményeinek és egyéb vonatkozó rendelkezésének. Az eredeti EU megfelelőégi nyilatkozat itt érhető el <http://www.cudy.com/ce>.

**18. Română**  
Cudy declară prin prezenta că acest dispozitiv este conform cu cerințele esențiale și alte prevederi relevante ale Directivei 2014/30/UE, Directivei 2014/35/UE, Directivei 2014/53/UE, Directivei 2011/65/UE, Directivei (UE) 2015/863, Directivei 2009/125/CE, Directivei (UE) 2023/826, Directivei (UE) 2019/1782. Declarația originală de conformitate UE este disponibilă la <http://www.cudy.com/ce>.

**19. Български**  
Cudy декларира в настоящото, че това устройство отговаря на основните изисквания и другите приложими разпоредби на Директива2014/30/ЕС, Директива2014/35/ЕС, Директива 2014/53/ЕС, Директива 2011/65/ЕС, Директива (ЕС) 2015/863, Директива 2009/125/ЕО, Директива (ЕС) 2023/826, Директива (ЕС) 2019/1782. Оригиналната декларация за съответствие на ЕС е достъпна на <http://www.cudy.com/ce>.

**20. Lietuvių kalba**  
Cudy šiuo pareiškia, kad šis įrenginys atitinka esminius reikalavimus ir kitas svarbias Direktyvų 2014/30/ES, Direktyvų 2014/35/ES, Direktyvų 2014/53/ES, Direktyvos 2011/65/ES, Direktyvos (ES) 2015/863, Direktyvos 2009/125/EB, Direktyvos (ES) 2023/826, Direktyvos (ES) 2019/1782 nuostatas. Originali ES atitikties deklaracija pateikiama <http://www.cudy.com/ce>.

**21. Українська**  
Cudy цим заявляє, що цей пристрій відповідає основним вимогам та іншим відповідним положенням Директиви 2014/30/ЄУ, Директиви 2014/35/ЄУ, Директиви 2014/53/ЄУ, Директиви 2011/65/ЄУ, Директиви (ЄУ) 2015/863, Директиви 2009/125/ЄС, Директиви (ЄУ) 2023/826, Директиви (ЄУ) 2019/1782. Оригінальна декларація відповідності ЄС доступна за адресою <http://www.cudy.com/ce>.

**22. Hrvatski**  
Cudy ovime izjavljuje da je ovaj uređaj u skladu s bitnim zahtjevima i drugim relevantnim odredbama Direktiva 2011/65/EU, Direktiva 2014/30/EU, Direktiva 2014/35/EU, Direktiva 2014/53/EU, Direktiva (EU) 2015/863, Direktiva 2009/125/EG, Direktiva (EU) 2023/826, Direktiva (EU) 2019/1782. Izjava EU izjava o sukladnosti dostupna je na <http://www.cudy.com/ce>.

**23. Slovenščina**  
Cudy s tem izjavlja, da je ta naprava skladna z bistvenimi zahtevami in drugimi relevantnimi določili Direktiv 2011/65/EU, Direktiva 2014/30/EU, Direktiva 2014/35/EU, Direktiva 2014/53/EU, Direktiva (EU) 2015/863, Direktiva 2009/125/ES, Direktiva (EU) 2023/826, Direktiva (EU) 2019/1782. Prvotna izjava EU o skladnosti je na voljo na <http://www.cudy.com/ce>.

**24. Latviski**  
Cudy ar šo paziņo, ka šī ierīce atbilst Direktīva 2011/65/ES, Direktīva 2014/53/ES, Direktīva 2014/30/ES, Direktīva 2014/35/ES, Direktīva (ES) 2015/863, Direktīva 2009/125/EC, Direktīva

(ES) 2023/826, Direktīva (ES) 2019/1782 būtiskajām prasībām un citiem atbilstošiem noteikumiem. Sākotnējā ES atbilstības deklarācija pieejama <http://www.cudy.com/ce>.

**25. Eesti**  
Cudy kinnitab käesolevaga, et see seade vastab direktiiv 2011/65/EL, direktiiv 2014/30/EL, direktiiv 2014/35/EL, direktiiv 2014/53/EL, direktiiv (EL) 2015/863, direktiiv 2009/125/EÜ, direktiiv (EL) 2023/826, direktiiv (EL) 2019/1782 põhinõuetele ja muudele asjakohastele sätetele. Originaalne EL vastavusdeklaratsioon on saadaval aadressil <http://www.cudy.com/ce>.

**WEEE**  
According to the EU Directive on Waste Electrical and Electronic Equipment (WEEE - 2012/19 / EU), this product must not be disposed of as normal household waste. Instead, they should be returned to the place of purchase or taken to a public collection point for recyclable waste. By ensuring this product is disposed of correctly, you will help prevent potential negative consequences for the environment and human health, which could otherwise be caused by inappropriate waste handling of this product. For more information, please contact your local authority or the nearest collection point. Improper disposal of this type of waste may result in penalties according to national regulations.

**GNU General Public License Notice**  
The software code in this notice was created by third parties and is licensed under the GNU General Public License ("GPL"). If applicable, Cudy ("Cudy" in this context refers to the Cudy entity offering respective software for download or being in charge of the distribution of products that contain respective code) makes the corresponding GPL source code available upon request via the official website, either independently or with the assistance of third parties (such as Shenzhen Cudy Technology Co., Ltd.). For GPL-related questions, email [support@cudy.com](mailto:support@cudy.com). In addition, Cudy offers a GPL-Code-Centre under <https://www.cudy.com/gplcodecenter/download> where users can get the GPL source codes used in Cudy products for free. Please note, that the GPL-Code-Centre is only provided as a courtesy to Cudy's customers but may neither offer a full set of source codes used in all products nor always provide the latest or actual version of such source codes. The GPL code used in this product is subject to the copyrights of one or more authors and is supplied WITHOUT ANY WARRANTY.

