



The ePowerSwitch-4+ is a power strip with an integrated web server that allows individual control of the outlets via the IP network or a USB connection. This compact solution provides flexible remote-control options and is ideal for a variety of applications, from home networks to industrial environments.

The ePowerSwitch-4+ can be easily programmed using a user-friendly graphical interface (GUI) with just 5 rules.

1/ Scheduler Rule: **Precise Timing for Scheduled Actions**

This rule offers meticulous scheduling for diverse actions within defined timeframes, including controlling outlets and relay outputs of xBus-connected peripherals. Additionally, it facilitates notifications via email, SNMP trap, and syslog.

2/ Timer Rule: **Precise On and Off Times**

This rule allows for individual control of power outlets, enabling the efficient management of power consumption and significantly reducing energy costs.

3/ Ping Monitoring Rule: **Monitoring of IP Devices**

This rule enables active monitoring of the proper operation of IP devices. In cases of failure or lack of response, these rules automatically trigger specific actions to ensure operational continuity. These actions include automatically restarting hung IP devices and sending warning notifications via email, SNMP Trap, and Syslog as soon as issues are detected.

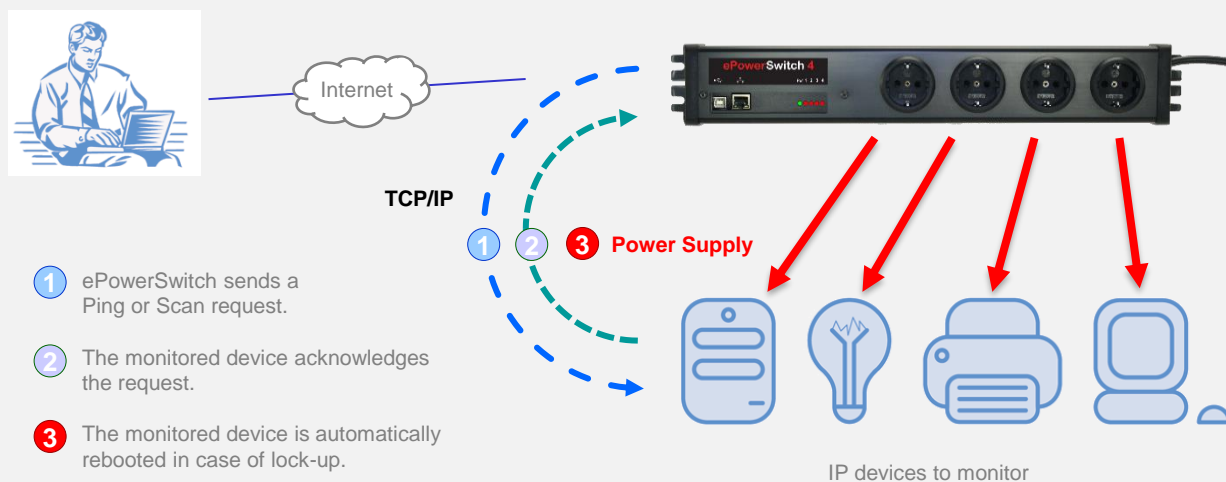
4/ Scan Monitoring Rule: **Application Integrity Monitoring**

The port scan function is used to monitor the specific status of a port to verify the start of an application associated with that port. These actions include automatically restarting hung IP devices and sending warning notifications via email, SNMP Trap, and Syslog as soon as issues are detected.

5/ Trigger Rule: **Remote Control of a Remote ePowerSwitch**

The trigger rule allows the control via IP of the outlets of an ePowerSwitch with an Ethernet interface from another ePowerSwitch with Ethernet interface.

Following ePowerSwitch units can be used: ePowerSwitch 1G, ePowerSwitch 4+ FR and DE, ePowerSwitch 4 IEC, ePowerSwitch 4M+, ePowerSwitch 8M+, ePowerSwitch 8M+/32, and ePowerSwitch 8XM+/32.



Advantages

- **4 remotely controllable power outlets** via browser, SNMP, HTTP GET commands, or USB.
- **Auto-reboot function for up to 4 IP devices** such as servers, routers, cameras, and more.
- **Turning on, off, toggles and programmable restart settings** for the auto-reboot function
- **32 programmable rules** (Scheduler, Timer, Ping, Scan, and Trigger)
- **Developer function** for easy implementation of HTTP commands
- **Integrated timers, schedulers, and real-time clock** with SNTP time synchronization function
- **32 user accounts** with restricted privileges
- **IP security: protected access via username and password** using MD5 authentication
- **Programmable labels** for the device, outlets, rules...
- **Easy and quick configuration** via graphical user interface (GUI)
- **The employed protocols consist of:** TCP/IP, HTTP, DHCP, SNMP, SMTP, SNTP, Syslog
- **Online contextual help and firmware updates via LAN**

Models



Type E socket (French standard)

Ref: ESP 4+ FR

4 sockets French standard, integrated power cable with Euro/Schuko plug



Type F Socket (German standard)

Ref: ESP 4+ DE

4 sockets German standard, integrated power cable with Euro/Schuko plug

What's included?

- ✓ 1 rack-mountable ePowerSwitch 4+ with integrated SCHUKO/Euro power cable 2.0 m
- ✓ 1 RJ45 network cable 1.80 m
- ✓ 1 USB cable 1.80 m
- ✓ 1 USB stick containing:
 - Windows IP configuration tool
 - Datasheet
 - Quick start guide

Technical Specifications

Input rated voltage	100-240VAC – 50/60Hz
Maximum total input load	10A
Maximum load per outlet	10A
Number of outlets	4 (FR or DE)
Network standards	IEEE 802.3, 10/100 Mbit/s
Network protocols	TCP/IP, HTTP, DHCP, SNMP, SMTP, SNTP, Syslog
Network connection	RJ-45 for FTP or STP CAT5
Network cable length	100 m (max.)
Terminal connection	USB 2.0 Type-B male
LEDs	Power supply, network traffic, outlet status
Operating temperature	0°C to 40°C
Operating humidity	10% to 80% Non-condensing
Dimensions (L x W x H)	485 x 74 x 47 mm
Weight	1 Kg
Warranty	2 years, repair or replacement

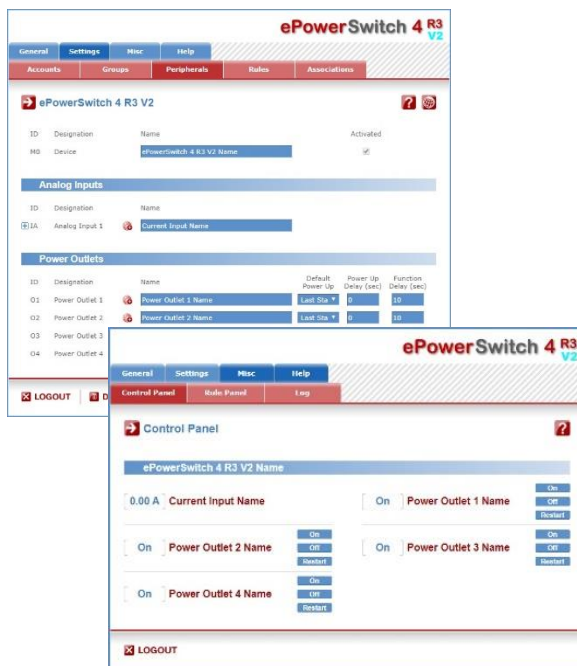
EU Declaration of Conformity

Application of Council Directives
 2014/35/EU Low Voltage Directive
 2014/30/EU EMC Directive
 2011/65/EU + 2015/863 RoHS

Standards to Which Conformity declared
 EN62368-1, EN55032, EN50581

User-friendly Web Interface

Device settings and outlet control are managed through a secure web interface, allowing for easy configuration and management.



Windows Configuration Tool

This tool is designed to easily configure your ePowerSwitch with network parameter settings.

