

TEST-i

Model No. 258898
user manual



Hobbes®
INNOVATION

Content

• Introduction	02
• Product Description	03
• Button definition	05
• Features	06
• Specification	07
• Instructions for Operation	08
- Getting Started	08
- Test Cable	10
- Fast Test	11
- Save, Delete, Browse and Upload the Record	14
• Driver Installation	17
- Before Installation	17
- Driver Installation	23
- Hardware Connects	32
- To Uninstall Driver	34
• Remarks	36
• Warning	37
• Warranty	38

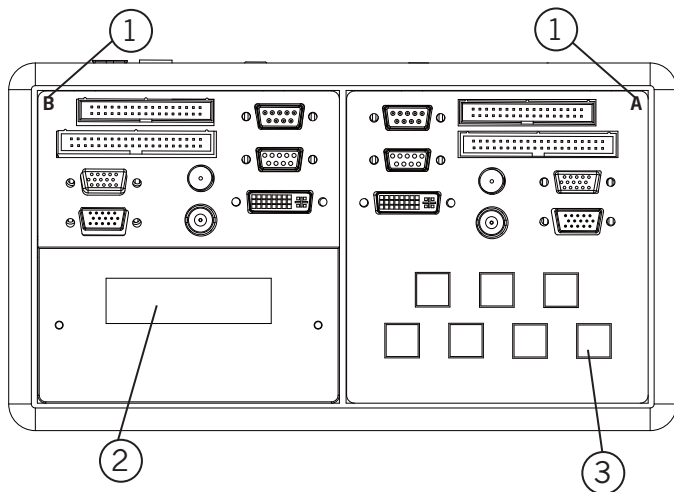
Introduction

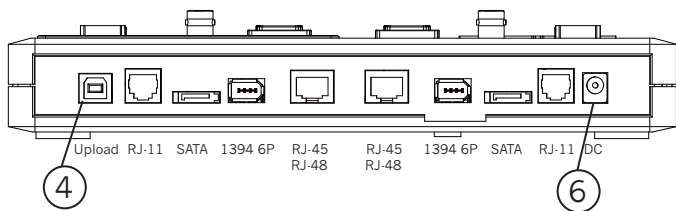
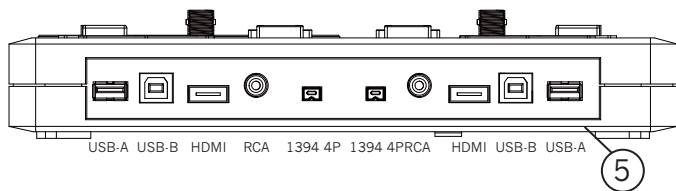
The third generation of PC Cable Tester–**TEST-i**, a specially designed multi–function cable tester that tests and analyzes a comprehensive range of PC connector types and the most commonly used flat cables.

The **TEST-i** not only tests each pins connection to identify opened circuits, shorted circuits, crossed wires, mis–wires and pin–to–pin connectivity, but can also record up to a 100 test results. The crucial data collected can be saved and uploaded to a PC for analysis via USB. With an integrated LCD Display (w/back light function), users can clearly determine the cable pin wiring easily and efficiently. The **TEST-i** makes an excellent and essential tool for a system integrator to quickly troubleshoot and perform pin test on PC cables.

Product Description

1. Ferric Plate: A. Transmission, B. Receiving
2. LCD display with back light function
3. Control Switch: UP, DOWN, ON/OFF, SAVE, DELETE, BACK, ENTER
4. FRONT SIDE: with data upload
5. BACK SIDE
6. DC 9V 500mA power jack (adppter not included)





Button definition

Button	Description
ON/OFF (Backlight)	Press ON/OFF button to power on/off the tester and backlight
UP/DOWN	Press UP/DOWN button to select the function
SAVE	Press SAVE button to save the test result
DELETE	Press DELETE button to delete the record
BACK	Press BACK button to return to main menu or previous selection
ENTER	Press ENTER button to run the selected function

Features

- Identify opened wires, shorted wires, crossed-wires and mis-wires connectivity
- Support 18 flat types of PC connectors
- 100 Test results can be saved and transferred to PC via USB
- Alphanumeric LCD display with backlight function
- With cable test, cable browsing, quick test function
- Low battery indicator

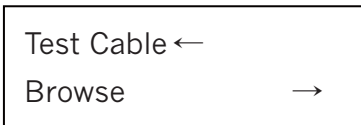
Specification

- Product: TEST-i Multi-Function PC Cable Tester
- Model: 258898
- Hardware
 - Connectors: IDC40, IDC34, DVI29, HDB15M/F, DB9M/F, COAX, BNC, RJ-11, RJ-45, 1394-6P, 1394-4P, SATA, USB (A/B), HDMI, RCA
 - Control Switch: ON/OFF F(POWER), UP, DOWN, SAVE, DELETE, BACK (CANCEL), ENTER
 - Display: LCD size: 2rows, 16characters, w/backlight
 - Power: DC 9V Battery compartment, DC 9V 500mA power jack (adapter not included)
- Emission: CE, RoHS compliant

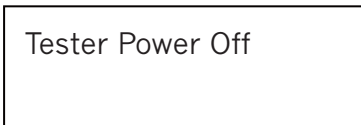
Instructions for Operation

Getting Started

1. Push the **ON/OFF** button to power “on” the tester, a beep sound will indicate the tester is working. The LCD display the following message:



2. In operating mode, you can press **ON/OFF** button to switch the LCD's backlight to “on”/”off”. By holding the **ON/OFF** button, the LCD will display the following message:



The tester will power “off” when you release the button.

3. In operating mode, you can hold the **DOWN**

button 5 sec. to activate the “**Alarm**” function after the display shows “**Alarm OFF (or ON)**”, press **ENTER** to turn on/off the alarm and press **DOWN** button back to previous menu.

Alarm OFF

4. In operating status, press **UP** or **DOWN** button to select the desired mode: “**Test Cable**” for cable testing, “**Browse**” to review the saved data, or “**Fast Test**” to quickly test cable, then press **ENTER** for the desired selection.

Test Cable
Browse ← →

Fast Test ←
←

Test Cable

1. Use **UP** or **DOWN** button to select the pin number for the cable you want to test, then press **ENTER** to start the testing.

Press Enter To
Select Pin Num.

01 ← 04 06 07
08 09 15 →

2. When testing is done, LCD will display the pin-to-pin connectivity displaying results as follow:

A01-B03 A02-B06
A03-B01 A04-B07 →

3. If no cable connected on the tester, it will give off two “beep” sounds and display the message “**Empty**”.

Empty

You can select **UP** and **DOWN** to check each pin-to-pin test result, or press **ENTER** to select pin number, or press **BACK** to return to main menu.

Fast Test

TEST-i also provides quick test function to test a large number of cables in a short time.

1. Select **Fast Test** in main menu then press **ENTER**.

Fast Test ←

←

2. Select **Define Standard** to create the standard pin-to-pin connectivity as the model, the standard will be compared to the other cable and determine whether the cable is good or

bad. The standard rule is saved automatically.

Test Cable ←
Define Standard

A01-B01 A02-B02
A03-B03 A04-B04 →

3. If the standard is defined, select **Test Cable** to check cable's status. If the cable's pin to pin connectivity matches the standard, TEST-i will show **OK** and display the detailed pin to pin connectivity. If not, TEST-i will show **Error** and also display the cable's detailed information.

OK

A01-B01 A02-B02
A03-B03 A04-B04 →

Error

A01-B01 A02-B06
A03-B01 A04-B07 →

Save, Delete, Browse and Upload the Record

1. Press **SAVE** button to save the last test result (saving sequence is from 1 to 100).

Saved No.003 OK

2. By pressing **DELETE** button, the tester will display two options in the menu: “**Delete All**” or “**Delete One**” Press **UP** or **DOWN** button for desired selection.

Delete All ←
Delete One

3. If deleting a specific record, select “**Delete One**” and press **UP** or **DOWN** button to choose the record you want to delete, then press **ENTER** to delete the record (Note: by pressing **ENTER** again, it will delete the next record saved). Press **BACK** to return to the main menu.

Record No.
001

Delete 001 OK

4. To review saved record, select **Browse** function in main menu. Press **UP** or **DOWN** button to select the desired record and press **ENTER** to display data.

Browse
002 Record →

5. To connect TEST-i to a computer (via USB) to upload the data, driver and software (included) must be installed on the computer. Please refer to next section for more detail process.

Driver Installation

A) Before Installation

1. Uninstall any previous TEST-i driver first prior to installation from control panel → Add or Remove program (refer to D) to uninstall driver).



2. **But** If an older version, v. 1.0–1.1, has been installed, the user is not able to uninstall driver automatically. Please uninstall manually as follows steps in advance. (normally happens to Windows XP)
3. Please connect TEST-i device → goes to Device manger → Universal Serial bus controller →

move to CP2101 USB Composite Device (either CP210x USB Composite Device or CP210x USB to UART Bridge Controller)

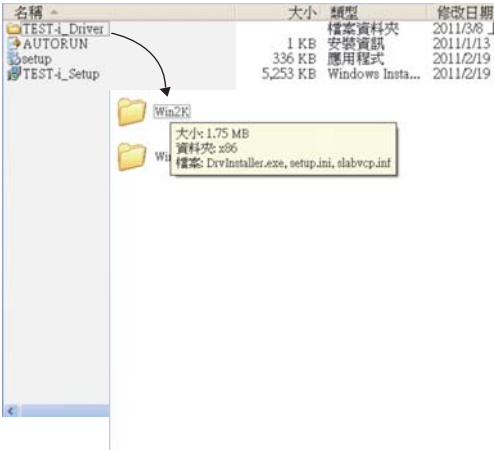


4. Right-click the mouse → Update Driver Software → select the destination folder manually.
5. Install from a list or specific location to TEST-i-Driver\WinXP_2003_Vista_7 → Follow the on

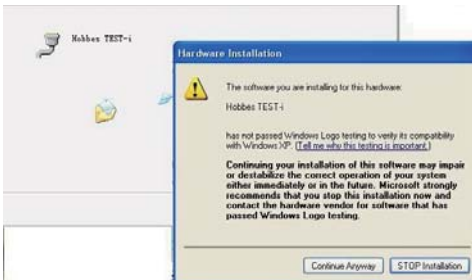
screen instructions.



TEST-i driver\Hobbes TEST-i\TEST-i_Driver



6. When an unsigned driver installation warning is displayed, ignore and presses continue anyway → completing the Found New Hardware Wizard.

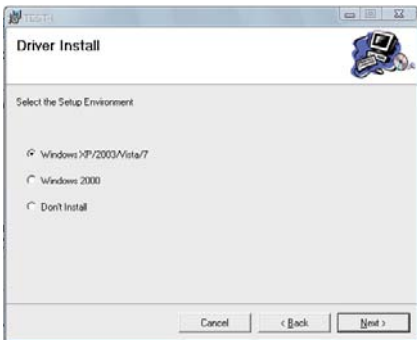




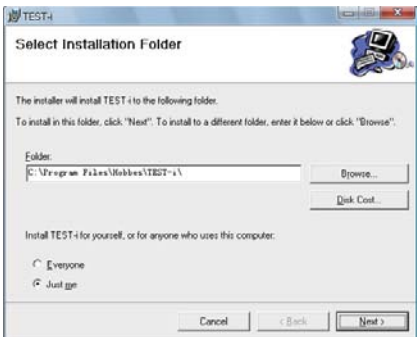
B) Driver Installation

1. Insert CD into the CD-ROM drive. Setup will start automatically. If it does not start after several seconds → double-click **My Computer** on your desktop (or click the **Start** button, and click **My Computer**) → right-click your CD drive, and then click **AutoPlay**. If driver has been downloaded from the website, decompress the file into same folder and manual then Click the setup.exe.
2. Follow the on screen instructions. Select your Operating system.

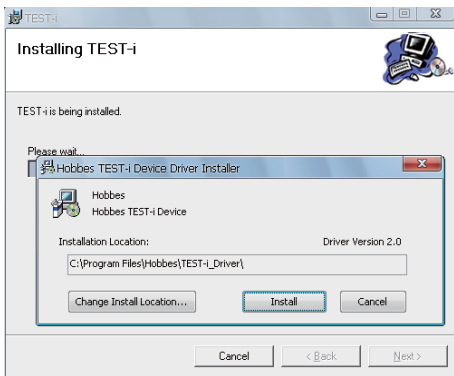




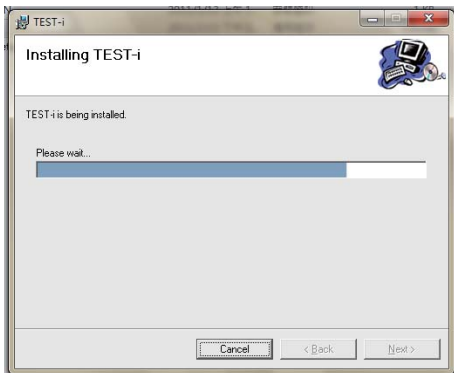
3. Select the destination folder: To install into the default folder, click “Next”. You can change the installation folder by inputting or selecting the browse button to choose a different folder.



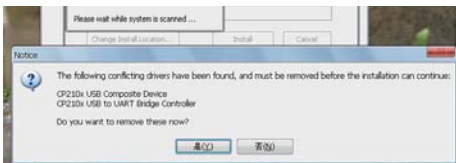
4. To start Installation of the TEST-i device driver
→ Click “Install”



5. Device driver is installing (allow the installer to process).



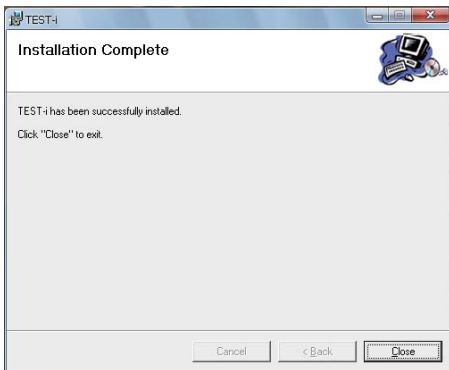
6. If an older version of the driver is detected, the program will ask you to remove the old driver before installing the new one → Click Yes (Y) to uninstall the old driver.



7. When an unsigned driver installation warning is displayed, ignore and press Continue (C)



8. After the new driver has been installed, the program will ask you to reboot the system in order to complete the whole installation process. Press Yes (Y) to continue.



9. If this is the first time you had installed the device driver, the screen above may appear without having to reboot your computer.

Please Click “Close” to exit. After the driver has been successfully installed, a TEST-i icon will display on the Desktop as



10. If this is not the first time you had installed the device driver, please goes to A Before Installation steps.

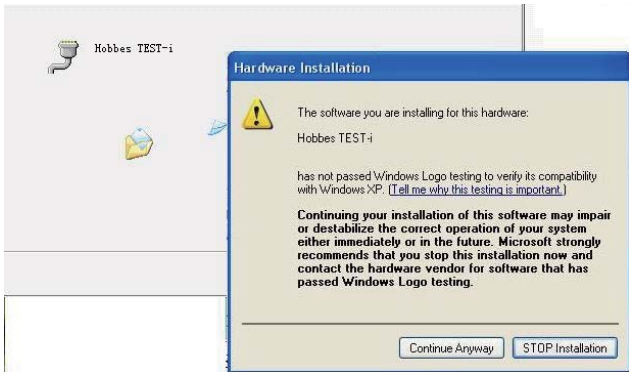
C) Hardware Connects

Environment: Windows 2000, Windows XP, Windows 7, Vista

1. Connecting TEST-i via USB cable (included in the package: TEST-i, CD disk and USB cable)
2. Connect the USB Cable on the unit and your computers USB Port. The system will automatically detect and search the driver. Select “Installed software automatically” then Click “Next”



3. When an unsigned driver installation warning is displayed, ignore and press Continue (C)



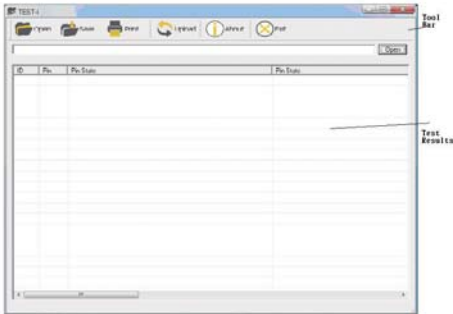
4. After the installation process has been completed. Click “Finish” to close the window.



5. Connect TEST-i into computer via USB cable and Click TEST-i icon on the Desktop.



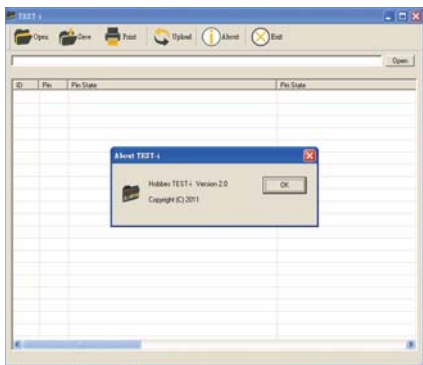
6. TEST-i table will pop up. Toolbar includes Open, Save, Print, Upload, About and Exit. TEST results includes ID, Pin and Pin State.



7. Toolbar:

- 1) Open: Open the file that has been saved.
- 2) Save: Saving test result.
- 3) Print: Print test result.
- 4) Upload: Upload the data that has been saved on TEST-i.

- 5) About: Indicate current version of Hobbes TEST-i installed.
- 6) Exit: Exit TEST-i.



8. TEST result: Includes ID number, Pin number of testing cable, pin to pin status.

ID	Pin	Pin State
001	(40pin)	A01 A02-A19-A22-A24-A26-A30-A34-A40-B02-B19-B22-B24-B26-B30
002	(40pin)	A01 A02-A19-A22-A24-A26-A30-A34-A40-B02-B19-B22-B24-B26-B30
003	(40pin)	A01 A02-A19-A22-A24-A26-A30-A34-A40-B02-B19-B22-B24-B26-B30
004	(40pin)	A01 A02-A19-A22-A24-A26-A30-A34-A40-B02-B19-B22-B24-B26-B30
005	(40pin)	A01 A02-A19-A22-A24-A26-A30-A34-A40-B02-B19-B22-B24-B26-B30
006	(40pin)	A01 A02-A19-A22-A24-A26-A30-A34-A40-B02-B19-B22-B24-B26-B30
007	(40pin)	A01 A02-A19-A22-A24-A26-A30-A34-A40-B02-B19-B22-B24-B26-B30
008	(40pin)	A01 A02-A19-A22-A24-A26-A30-A34-A40-B02-B19-B22-B24-B26-B30

Found Problems

(X)(Y): shows the number of the referring pin

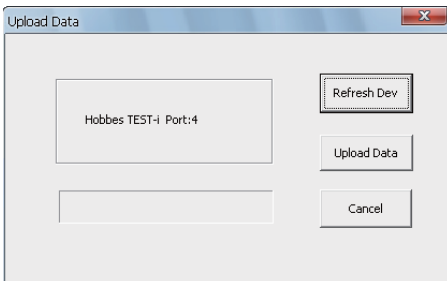
A (X)–: The cable is broken (no connection);
Broken circuit

A (X)– B (X): Correct connection (Cable is good)

A (X)– A (Y)– B (X)– B (Y): Crossed, shorted.
(The connection is shorted; Cable defective)

A (X)– B (Y): Mis-wired. (The connection is
mis-wired; Cable defective)

9. Uploading the data → Press the “Upload Data” button.

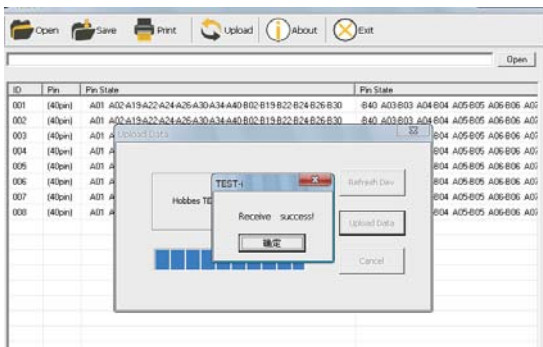


- 1) Refresh Dev: Click “Refresh Dev” to refresh the

device once windows can't detect it successfully (make sure device is connected properly and all connections are secure).

- 2) Upload Data: Click "Upload Data" to upload test result to PC.
- 3) Cancel: Click "Cancel" to exit Upload Data window.

10. Clicking "Upload data" → receive success → Ok.

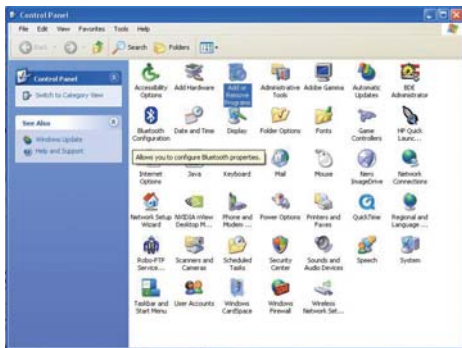


11. The test results will display completely.

ID	Pin	Pin State	Pin State
001	[Open]	A01-B01 A02-A03-B02-B03 A04-B04 A05-B05 A06-B06 A07-B07	A00-B00 AGD-BGD
002	[Open]	A01-B01 A02-A03-B02-B03 A04-B04 A05-B05 A06-B06 A07-B07	A00-B00 AGD-BGD

D) To Uninstall Driver

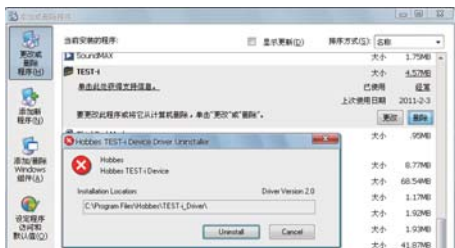
1. Go to control panel → Add or Remove Programs.



2. Remove TEST-i.



3. Uninstall the TEST-i driver.



4. Restart the computer after uninstall process → uninstalled completely.



Remarks

- If the driver was damaged or not installed correctly, please set up TEST-i driver again.
- In order to download TEST-i driver from www.hobbes-group.com Hobbes Group web site, please sign up as Hobbes Group member then register product on the web site. To sign up as Hobbes Group member, please go to Member Center/ Sign Up/Create ID or Sign Up on the web site. To register product, please go to Service/Product Register.

Warning

1. Please don't connect the tested cable to the same side of the test interface.
2. The tester did not test the ground unless the extension test is applied to PC interface test unit together. In this application, the pin 40 means ground.
3. If you are going to use the tester in the same place for a long time, the optional power adapter instead of the battery is recommended.



Power: DC 9V 500mA

4. Do not attempt to open or disassemble the unit by yourself. You run the risk of voiding the limited warranty. If the product appears to be damaged or does not function properly, please send it to original dealer to obtain warranty service.
5. When you test an ultra ATA flat cable (40pins/80 conductors), please be aware of the connector color because you might get the different result.

Warranty

The device is guaranteed for one years from the date of original sale. The manufacturer will repair the device free of charge if manufacturer determines the product failed due to manufacture defect. This warranty is only valid if the device is used for its intended purposes only. Manufacturers warranty is voided if the product has been tampered and damaged from misused.

