



## DCS-4622

# Vigilance Full HD Panoramic PoE Camera

### Features

#### Camera

- 1/3.2" 3-megapixel CMOS progressive sensor
- Fixed fisheye lens: 1.1 mm F2.0
- Built-in microphone and speaker for 2-way communication
- ONVIF compliant

#### Connections

- 10/100 Fast Ethernet port with PoE support
- microSD card slot for onboard storage<sup>2</sup>

#### Image & Video

- High resolution video and snapshots, up to 1920 x 1536
- Distortion correction
- H.264 and Motion JPEG compression
- Desktop, Wall, and Ceiling mount display modes
- ePTZ viewing
- Simultaneous multi-stream support
- Supports multiple access lists
- Built-in Samba client for saving to a NAS

The all-seeing-eye of the DCS-4622 Vigilance Full HD Panoramic PoE Camera gives you 360° coverage that captures it all. With its fisheye lens, a high-resolution 3-megapixel sensor and distortion correction, it's the ideal solution for monitoring large areas with a single camera. It is part of the Vigilance Camera Range that offers professional, full featured high definition video surveillance that is easy to install and highly affordable. The range consists of cameras designed specifically to meet different surveillance and environmental requirements.

### 360 Degree Surveillance

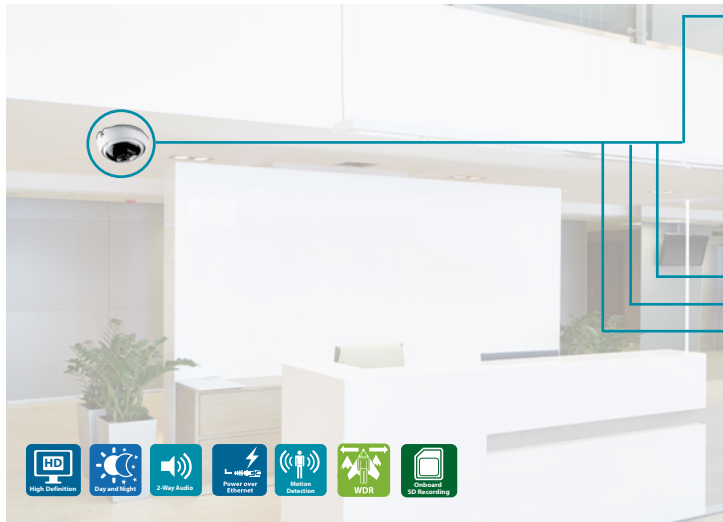
The DCS-4622 uses a fisheye lens to provide incredible wide angle coverage; simply place it on a wall for panoramic 180° wall-to-wall coverage of a room, or place it on a ceiling for a full 360° view without blind spots. Distortion correction fixes the camera video so you can use ePTZ to zoom in, zoom out and pan across your camera's video to survey a large area with ease.

### Keep Watch 24/7

Day or night, the Vigilance Full HD Panoramic PoE Camera watches over your home or office to keep you informed of what's going on. Night vision with IR illuminators makes sure nothing is hidden in the shadows, even in complete darkness. Motion detection lets you record events with ease and can even save snapshots and video before the event even happens so you can get the whole picture. Two-way audio not only lets you hear what's happening but also lets you talk back, so you can greet visitors or scare off intruders.

### A Complete Expandable Surveillance Solution

The DCS-4622 is a self-sufficient surveillance solution, capable of recording snapshots and video to a microSD card without requiring a PC or network storage device. If you want to expand your surveillance options, D-ViewCam management software is also included, giving you the ability to manage up to 32 cameras with a robust set of features, including multi-camera views and automated e-mail alerts to keep you informed of suspicious or unusual activities.



**360° Whole Room Coverage**

- See it all with a wide-angle fisheye lens that gives you complete 360° coverage that lets you monitor a large area with a single camera

**HD Image Quality and Detail**

- High-resolution 3-megapixel sensor provides a high-resolution image (up to 1920 x 1536) to monitor a large area with excellent detail

**Wide Dynamic Range**

- Allows the camera to see objects in contrasting light conditions.
- Ideal for entrances or windowed foyers where it is necessary to monitor both indoor and outdoor areas, or shadowed areas as well as brightly lit areas.

**A Versatile Little Camera That Does It All**

- Night vision, two-way audio, motion detection, triggered snapshots and recordings and even support for PoE so you can place it anywhere

**Free D-ViewCam™ Video Management Software DCS-100**

Bundled free with D-Link network cameras D-ViewCam enables users to centrally manage multiple cameras for home or businesses.

Supporting up to 32 network cameras and up to 64 users, D-ViewCam is compatible with all current D-Link network cameras and video servers, offers digital monitoring and recording with a wide array of features including simultaneous video recording, playback and live view.

D-ViewCam offers scheduled, motion and manual recording. Recorded files can be searched by video type and selected files can be played, edited and converted into AVI or ASF files. The e-map mode in the application allows users to arrange a map with camera locations and orientation, while additional features such as auto-patrol, rotate, zoom, and focus provide optimal control over video surveillance.



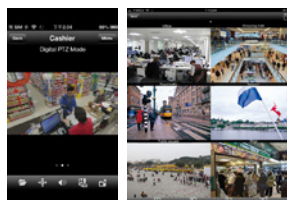
Playback view



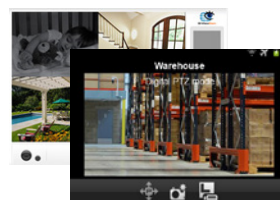
Live view

**D-ViewCam Mobile**

Keep an eye on your surveillance cameras anytime, anywhere with D-Link's D-ViewCam Mobile app. The D-ViewCam Mobile app makes it easy to check on your business no matter where you are, no matter what time of day it is.



For iPhones/iPads



For Android devices



## Technical Specifications

### Camera

|                            |   |  |
|----------------------------|---|--|
| Camera Hardware Profile    | <ul style="list-style-type: none"> <li>• 1/3.2" 3 megapixel progressive CMOS sensor</li> <li>• 8 metre (25 feet) IR illumination distance</li> <li>• Minimum illumination: <ul style="list-style-type: none"> <li>• Day Mode: 0.5 lux</li> <li>• Night Mode (LEDs off): 0.25 lux</li> <li>• Night Mode (LEDs on): 0 lux</li> </ul> </li> <li>• Built-in Infrared-Cut Removable (ICR) Filter module</li> <li>• Focal length: 1.1 mm</li> <li>• Aperture: F2.0</li> </ul> | <ul style="list-style-type: none"> <li>• Angle of view: <ul style="list-style-type: none"> <li>• (H) 180°</li> <li>• (V) 180°</li> <li>• (D) 180°</li> </ul> </li> <li>• Angle of adjustment: <ul style="list-style-type: none"> <li>• (V) 15°</li> </ul> </li> <li>• Minimum object distance: 0.3 m</li> <li>• Built-in microphone and speaker</li> </ul> |
| Image Features             | <ul style="list-style-type: none"> <li>• Configurable image size, quality, frame rate, and bit rate</li> <li>• Time stamp and text overlays</li> <li>• Flip and mirror</li> <li>• Configurable motion detection windows</li> </ul>  | <ul style="list-style-type: none"> <li>• Desktop, wall, and ceiling display modes</li> <li>• Configurable shutter speed, brightness, saturation, contrast, and sharpness</li> <li>• WDR</li> <li>• 3D filter</li> </ul>  |
| Display Modes              | <ul style="list-style-type: none"> <li>• Fisheye View</li> <li>• Normal View</li> <li>• Multi-View with Panorama</li> </ul>   | <ul style="list-style-type: none"> <li>• Panoramic View</li> <li>• Mixed View (with Fisheye)</li> <li>• Multi View</li> </ul>  |
| Video Compression          | <ul style="list-style-type: none"> <li>• Simultaneous H.264/MJPEG format compression</li> <li>• H.264/MJPEG multicast streaming</li> </ul>  | <ul style="list-style-type: none"> <li>• JPEG for still images</li> </ul>  |
| Video Resolution           | <ul style="list-style-type: none"> <li>• 1920 x 1536, 1440 x 1152, 1280 x 1024, 960 x 768, 640 x 512 up to 25 fps<sup>1</sup></li> </ul>  |  |
| Audio Support              | <ul style="list-style-type: none"> <li>• G.711</li> </ul>   | <ul style="list-style-type: none"> <li>• AAC</li> </ul>  |
| External Device Interfaces | <ul style="list-style-type: none"> <li>• 10/100 BASE-TX Fast Ethernet port</li> <li>• Supports 802.3af PoE (Class 2)</li> </ul>   | <ul style="list-style-type: none"> <li>• microSD/SDHC/SDXC card slot, accepts cards up to 128 GB<sup>2</sup></li> </ul>  |

### Network

|                   |   |  |
|-------------------|---|--|
| Network Protocols | <ul style="list-style-type: none"> <li>• IPv4, IPv6, ARP, TCP, UDP, ICMP</li> <li>• DHCP client</li> <li>• NTP client (D-Link)</li> <li>• DNS client</li> <li>• SMTP client</li> <li>• DDNS client (D-Link)</li> <li>• SMTP client</li> <li>• FTP client</li> <li>• HTTP server</li> <li>• HTTPS for configuration</li> <li>• Samba client</li> </ul> | <ul style="list-style-type: none"> <li>• PPPoE</li> <li>• UPnP port forwarding</li> <li>• RTP/RTSP/RTCP</li> <li>• IP filtering</li> <li>• QoS/DSCP</li> <li>• CoS</li> <li>• Multicast</li> <li>• SNMP</li> <li>• IGMP</li> <li>• ONVIF compliant</li> <li>• Bonjour</li> </ul> |
| Security          | <ul style="list-style-type: none"> <li>• Administrator and user group protection</li> <li>• Password authentication</li> </ul>  | <ul style="list-style-type: none"> <li>• HTTP and RTSP digest encryption</li> </ul>  |

### System Management

|                                       |  |  |
|---------------------------------------|--|--|
| System Requirements for Web Interface | <ul style="list-style-type: none"> <li>• Browser: Internet Explorer, Firefox, or Safari</li> </ul>   |  |
| Event Management                      | <ul style="list-style-type: none"> <li>• Motion detection</li> <li>• Event notification and uploading of snapshots/video clips via e-mail or FTP</li> <li>• Take snapshots/video clips and save to integrated microSD card slot</li> </ul> | <ul style="list-style-type: none"> <li>• Supports multiple SMTP and FTP servers</li> <li>• Multiple event notifications</li> <li>• Multiple recording methods for easy backup</li> </ul> |
| Remote Management                     | <ul style="list-style-type: none"> <li>• Configuration interface accessible via web browser</li> </ul>   |  |
| D-ViewCam™ System Requirements        | <ul style="list-style-type: none"> <li>• Operating System: Microsoft Windows 10/8/7/Vista</li> <li>• Web Browser: Internet Explorer 7 or higher</li> </ul>   | <ul style="list-style-type: none"> <li>• Protocol: Standard TCP/IP</li> </ul>  |
| D-ViewCam™ Software Functions         | <ul style="list-style-type: none"> <li>• Remote management/control of up to 32 cameras</li> <li>• Viewing of up to 32 cameras on one screen</li> </ul>   | <ul style="list-style-type: none"> <li>• Supports all management functions in web interface</li> <li>• Scheduled motion triggered or manual recording options</li> </ul>                 |

# DCS-4622 Vigilance Full HD Panoramic PoE Camera

| Physical                              |  |
|---------------------------------------|--|
| Weight                                | • 210 g ± 5%   |
| External Power Adapter (not included) | • Input: 100 to 240 V AC, 50/60 Hz<br>• Output: 12 V DC, 1.5 A                   |
| Power Consumption                     | • 4.6 watts max.   |
| Temperature                           | • Operating: 0 to 40 °C (32 to 104 °F)<br>• Storage: -20 to 70 °C (-4 to 158 °F) |
| Humidity                              | • Operating: 20% to 80% non-condensing<br>• Storage: 5% to 95% non-condensing    |
| Certifications                        | • CE<br>• CE LVD<br>• FCC<br>• C-Tick  |
| Dimensions                            |  |
| Optional Mounting Brackets            |  |
| <i>Part Number</i>                    | <i>Description</i>   |
| DCS-37-1                              | Wall type mount bracket  |
| DCS-37-2                              | Ceiling type mount bracket   |

<sup>1</sup> Frame rates when streaming video may vary depending on network conditions and method used.

<sup>2</sup> microSD card not included. microSD/SDHC/SDXC v3.1 compatible.



If the worst should happen to your network you need the very best support and fast. Downtime costs your business money. D-Link Assist maximises your uptime by solving technical problems quickly and effectively. With a choice of three affordable service offerings covering all D-Link business products, you can select the package that suits you best:

- [D-Link Assist Gold - for comprehensive 24-hour support](#)
- [D-Link Assist Silver - for prompt same-day assistance](#)
- [D-Link Assist Bronze - for guaranteed response on the next business day](#)

D-Link Assist can be purchased together with any D-Link business product. So whether you're buying switching, wireless, storage, security or IP Surveillance equipment from D-Link, your peace of mind is guaranteed.



For more information: [www.dlink.com](http://www.dlink.com)