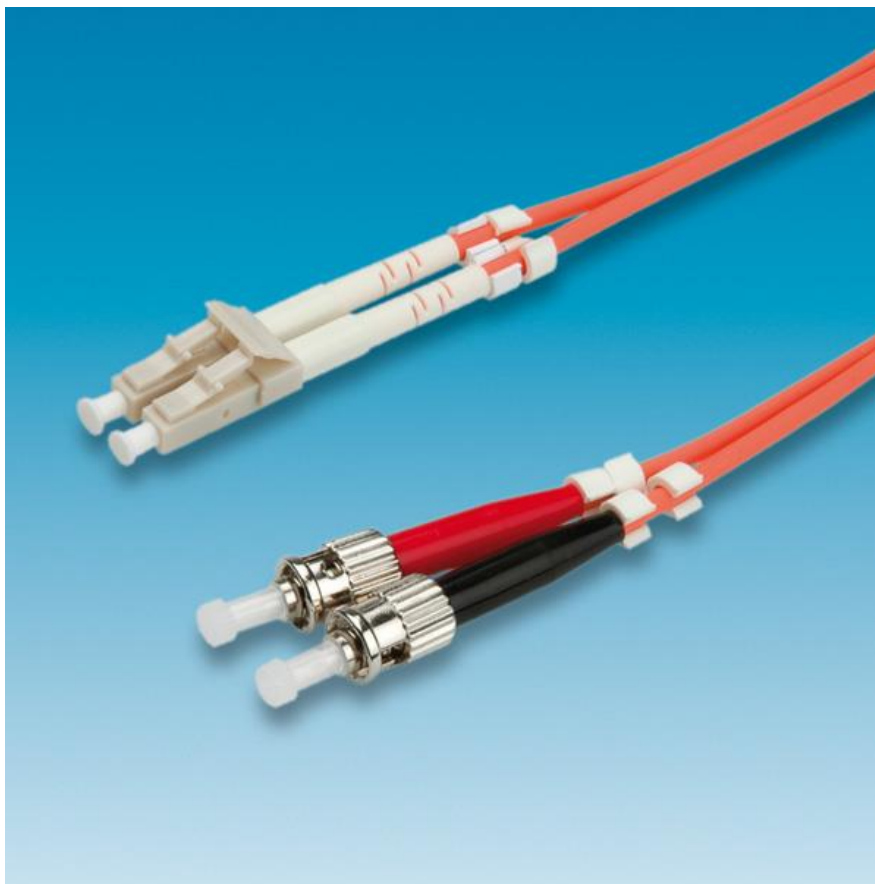




Datenblatt - Fiche technique - Data sheet

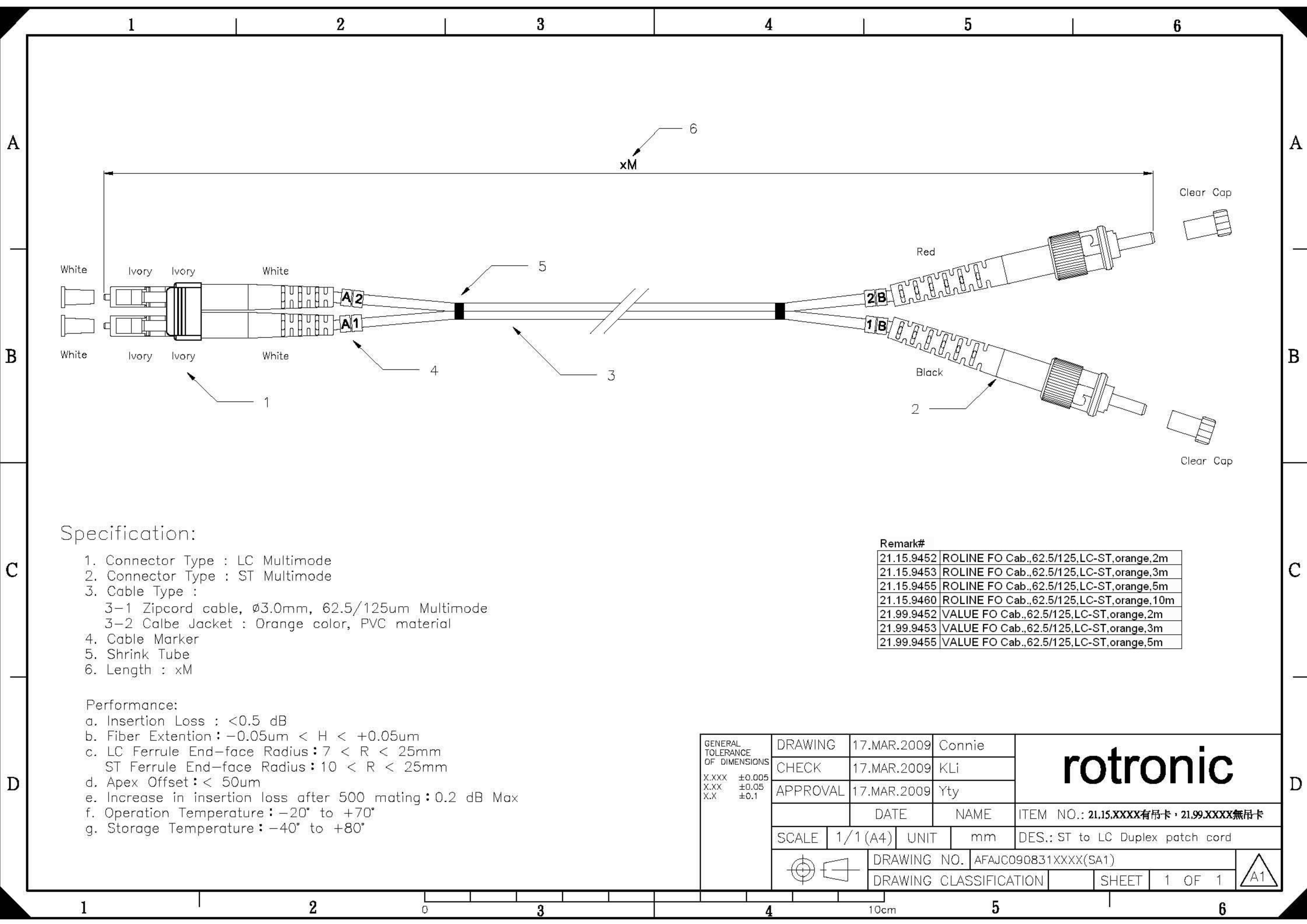
21.99.9455



VALUE LWL-Kabel 62,5/125 μ m LC/ST, orange, 5m

VALUE Câble patch FO 62,5/125 μ m LC/ST, orange, 5m

VALUE Fibre Optic Jumper Cable 62,5/125 μ m LC/ST, orange, 5 m



Specification:

- 1. Connector Type : LC Multimode
- 2. Connector Type : ST Multimode
- 3. Cable Type :
 - 3-1 Zipcord cable, $\phi 3.0\text{mm}$, 62.5/125um Multimode
 - 3-2 Calbe Jacket : Orange color, PVC material
- 4. Cable Marker
- 5. Shrink Tube
- 6. Length : xM

Performance:

- a. Insertion Loss : $< 0.5 \text{ dB}$
- b. Fiber Extention : $-0.05\mu\text{m} < H < +0.05\mu\text{m}$
- c. LC Ferrule End-face Radius : $7 < R < 25\text{mm}$
ST Ferrule End-face Radius : $10 < R < 25\text{mm}$
- d. Apex Offset : $< 50\mu\text{m}$
- e. Increase in insertion loss after 500 mating : 0.2 dB Max
- f. Operation Temperature : $-20^\circ \text{ to } +70^\circ$
- g. Storage Temperature : $-40^\circ \text{ to } +80^\circ$

Remark#

21.15.9452	ROLINE FO Cab.,62.5/125,LC-ST,orange,2m
21.15.9453	ROLINE FO Cab.,62.5/125,LC-ST,orange,3m
21.15.9455	ROLINE FO Cab.,62.5/125,LC-ST,orange,5m
21.15.9460	ROLINE FO Cab.,62.5/125,LC-ST,orange,10m
21.99.9452	VALUE FO Cab.,62.5/125,LC-ST,orange,2m
21.99.9453	VALUE FO Cab.,62.5/125,LC-ST,orange,3m
21.99.9455	VALUE FO Cab.,62.5/125,LC-ST,orange,5m

GENERAL TOLERANCE OF DIMENSIONS X.XXX ±0.005 X.XX ±0.05 X.X ±0.1	DRAWING	17.MAR.2009	Connie	rotronic	
	CHECK	17.MAR.2009	KLi		
	APPROVAL	17.MAR.2009	Yty		
		DATE	NAME	ITEM NO.: 21.15.XXXX有吊卡・21.99.XXXX無吊卡	
	SCALE	1/1 (A4)	UNIT	mm	DES.: ST to LC Duplex patch cord
		DRAWING NO.	AFAJCO90831XXXX(SA1)		
		DRAWING CLASSIFICATION		SHEET	1 OF 1

