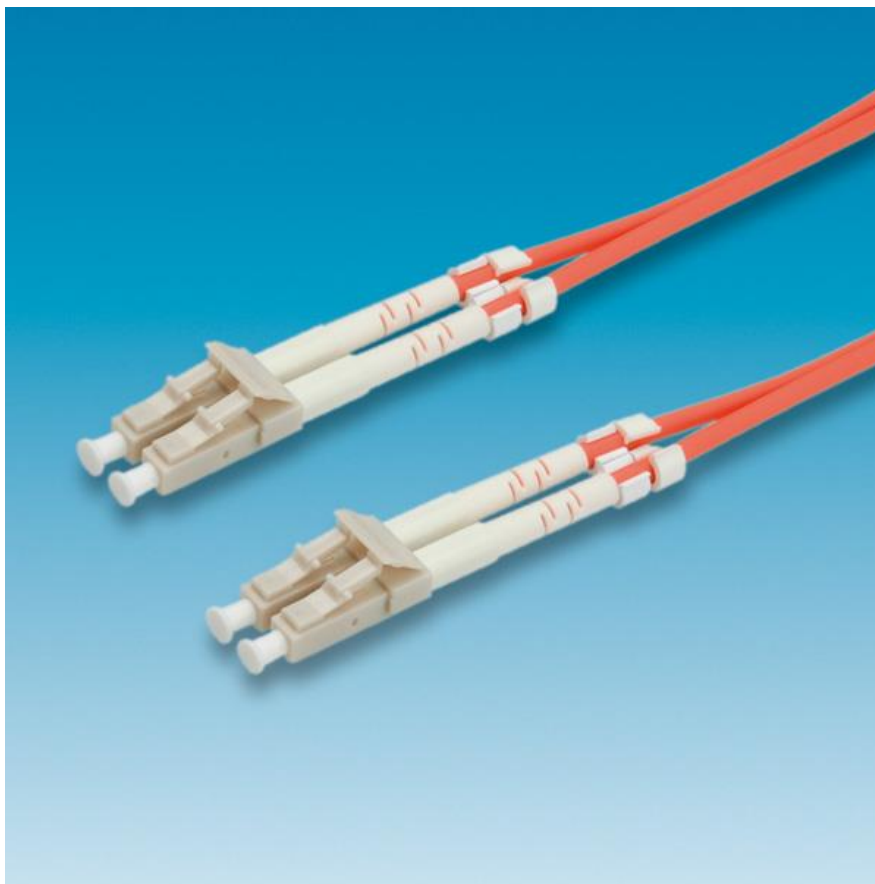




Datenblatt - Fiche technique - Data sheet

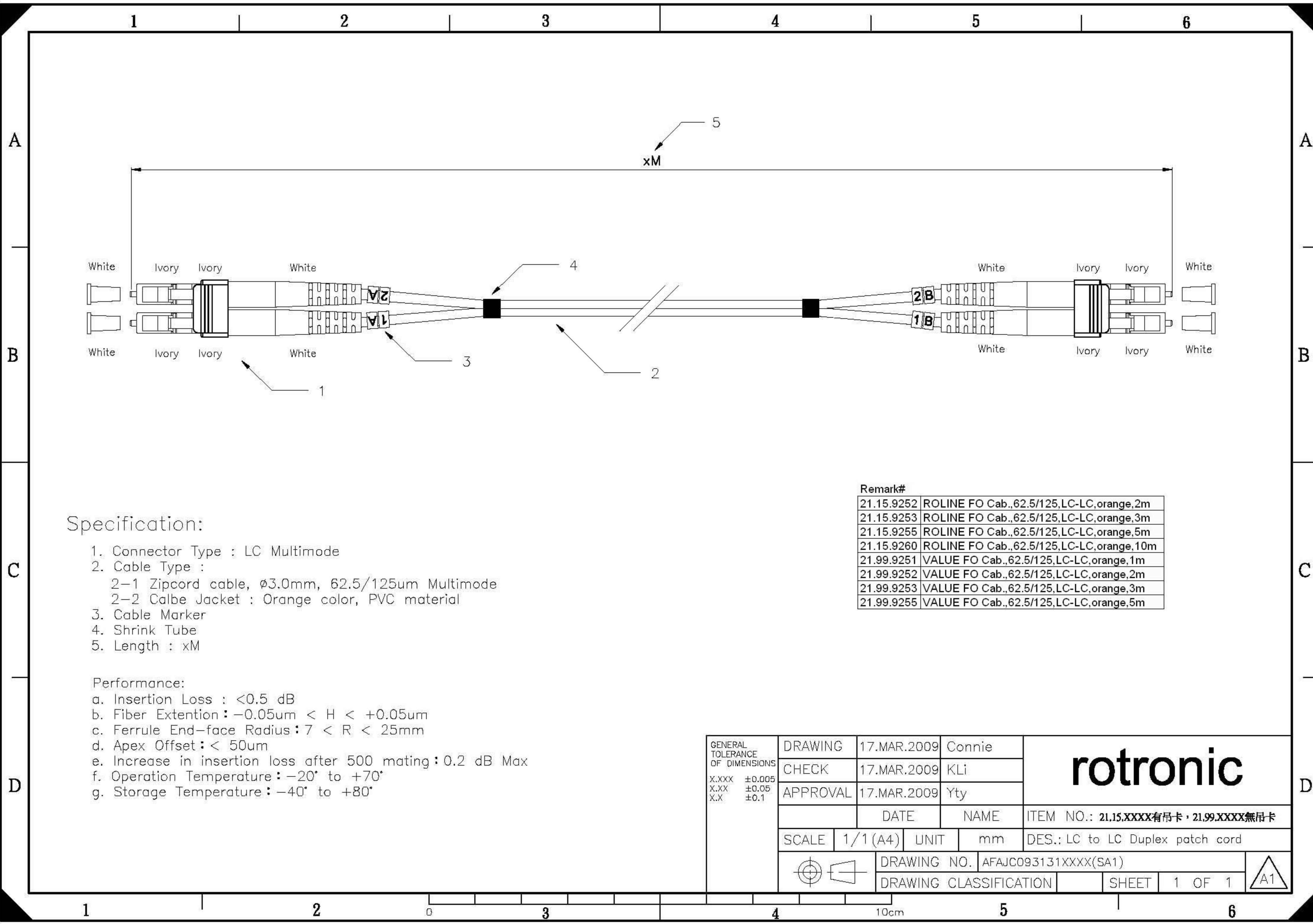
21.99.9250



VALUE LWL-Kabel 62,5/125 μ m LC/LC, orange, 0,5m

VALUE Câble patch FO 62,5/125 μ m LC/LC, orange, 0,5m

VALUE Fibre Optic Jumper Cable 62,5/125 μ m LC/LC, orange, 0.5 m



Specification:

1. Connector Type : LC Multimode
2. Cable Type :
 - 2-1 Zipcord cable, $\phi 3.0\text{mm}$, 62.5/125um Multimode
 - 2-2 Calbe Jacket : Orange color, PVC material
3. Cable Marker
4. Shrink Tube
5. Length : xM

Performance:

- a. Insertion Loss : $< 0.5 \text{ dB}$
- b. Fiber Extention : $-0.05\mu\text{m} < H < +0.05\mu\text{m}$
- c. Ferrule End-face Radius : $7 < R < 25\text{mm}$
- d. Apex Offset : $< 50\mu\text{m}$
- e. Increase in insertion loss after 500 mating : 0.2 dB Max
- f. Operation Temperature : $-20^\circ \text{ to } +70^\circ$
- g. Storage Temperature : $-40^\circ \text{ to } +80^\circ$

Remark#

21.15.9252	ROLINE FO Cab.,62.5/125,LC-LC,orange,2m
21.15.9253	ROLINE FO Cab.,62.5/125,LC-LC,orange,3m
21.15.9255	ROLINE FO Cab.,62.5/125,LC-LC,orange,5m
21.15.9260	ROLINE FO Cab.,62.5/125,LC-LC,orange,10m
21.99.9251	VALUE FO Cab.,62.5/125,LC-LC,orange,1m
21.99.9252	VALUE FO Cab.,62.5/125,LC-LC,orange,2m
21.99.9253	VALUE FO Cab.,62.5/125,LC-LC,orange,3m
21.99.9255	VALUE FO Cab.,62.5/125,LC-LC,orange,5m

GENERAL TOLERANCE OF DIMENSIONS X.XXX ±0.005 X.XX ±0.05 X.X ±0.1	DRAWING	17.MAR.2009	Connie	rotronic	
	CHECK	17.MAR.2009	KLi		
	APPROVAL	17.MAR.2009	Yty		
		DATE	NAME	ITEM NO.: 21.15.XXXX有吊卡・21.99.XXXX無吊卡	
	SCALE	1/1(A4)	UNIT	mm	DES.: LC to LC Duplex patch cord
	DRAWING NO. AFAJC093131XXXX(SA1)		DRAWING CLASSIFICATION		SHEET 1 OF 1

