



## Intelligent functions to make your security system operations easier and more secure

WV-SAE200 is possible to use the following functions: the face detection function and the i-VMD function (alarm functions: intrusion detection/ loitering/ direction detection/ scene change/ object detection/ cross line detection, the analysis data control function: people count/heat map, and the privacy function: MOR (Moving Object Remover)).

### Key Features

#### Intelligent Video Motion Detection

##### Intruder

Type1 / Type2 / Type3 / Type4

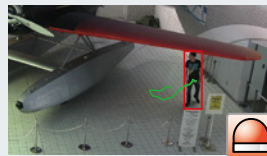
It is possible to issue an alarm when a moving object enters the area. Up to 8 objects, or 32 objects (Type3 only) can be detected simultaneously per channel.



##### Loitering

Type1 / Type2 / Type3 / Type4

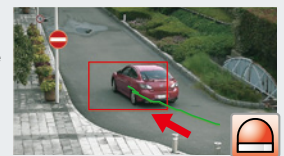
It is possible to issue an alarm when a moving object enters the area and stays for the specified period. Up to 8 objects, or 32 objects (Type3 only) can be detected simultaneously per channel.



##### Direction

Type1 / Type2 / Type4

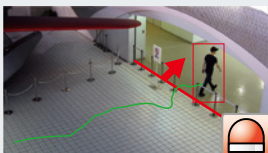
It is possible to issue an alarm when a moving object enters the area and moves to the specified direction. Up to 8 objects, or 32 objects (Type3 only) can be detected simultaneously per channel.



##### Cross line

Type2 / Type3 / Type4

It is possible to issue an alarm when an object moving to the specified direction crossed the line. Up to 8 objects, or 32 objects (Type3 only) can be detected simultaneously per channel.



##### Object

Type2 / Type3 / Type4

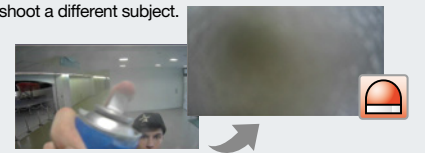
It is possible to issue an alarm if an object (suspicious object, etc.) is left behind in the area or taken away from the area. Up to 8 objects, or 24 objects (Type3 only) can be detected simultaneously per channel.



##### Scene change

Type1 / Type2 / Type3 / Type4

It is possible to issue an alarm when a camera is covered with something or the camera direction is changed to shoot a different subject.



##### People Counting

Type3

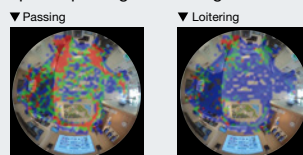
It provides function of counting the number of people who crossed the line in a certain direction which is set with "Line".



##### Heat-map

Type3

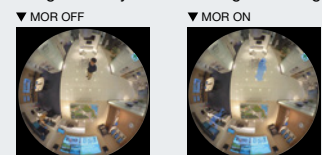
Heat-map provides statistical information of traffic lines. Counts up both passing and loitering in the shooting area.



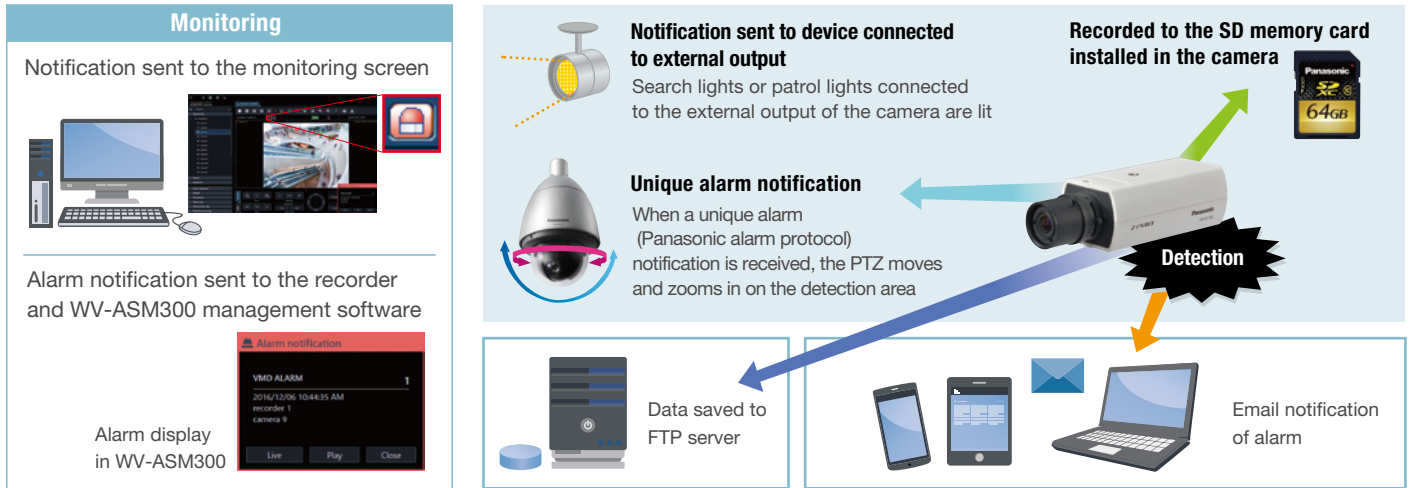
##### MOR(Moving Object Remover)

Type3

MOR is a privacy-conscious function which removes people from the image and only send the background image.



## Actions When an Alarm is Detected



## Specifications

### Intelligent Video Motion Detection

Detection program	Available number of programs	Up to 2
	Title	1 - 20 characters
Detection area	Available number of Detection Areas	Up to 8 detection areas (for each detection program)
	Paint type	Cross line, Quadrangle, Polygon (up to 16 apexes)
Mask area	Available number of Mask Areas	Up to 8 mask areas (for each detection program)
	Paint type	Quadrangle, Polygon (up to 16 apexes)
Detection mode	Intruder / Loitering / Direction / Object / Cross line	
Direction setup	One of eight directions can be chosen. (Upper, Upper right, Right, Lower right, Lower, Lower left, Left, Upper left)	
Scene change	ON / OFF	
Cross line setup	A --> B, B --> A, A <--> B	

### Advanced settings

Detection sensitivity	1(Low), 2, 3, 4(Middle), 5, 6, 7(High)	
Detection sensitivity (Object)	Low / Middle / High	
Detection sensitivity (Scene change)	1(Low), 2, 3, 4(Middle), 5(High)	
Scene change detection level	1(Low), 2(Middle), 3, 4, 5(High)	
Detection time	Intruder detection time	0.2 s / 0.4 s / 1 s / 2 s / 3 s / 4 s / 5 s / 10 s
	Loitering detection time	10 s / 20 s / 30 s / 1 min / 2 min / 3 min / 5 min
	Direction detection time	1 s / 2 s / 3 s / 4 s / 5 s / 10 s
	Object detection time	10 s / 20 s / 30 s / 1 min / 2 min / 3 min / 5 min
	Scene change detection time	1 s / 2 s / 3 s / 4 s / 5 s / 10 s
Detection size <sup>1</sup>	Min. size	10 / 20 / 30 / 40 / 50 / 60 / 70 / 80 / 90%
	Max. size	100 / 150 / 200 / 250 / 300%

<sup>1</sup> Except Type 3 network cameras

### Compatible models

	Registration Key Type	Product Number
Network Camera	Type1	WV-SW559 / WV-SW558 / WV-SW158 / WV-SP509 / WV-SP508 / WV-SF549 / WV-SF548 / WV-SF539 / WV-SF538 / WV-SF138
	Type2	WV-SVR611L / WV-SPW631LT / WV-SPW631L / WV-SPW611L / WV-SPW611 / WV-SPW532L / WV-SPW531AL / WV-SPW312L / WV-SPW311AL / WV-SPN631 / WV-SPN611 / WV-SPN531 / WV-SPN311 / WV-SPN310 / WV-SFV631LT / WV-SFV631L / WV-SFV611L / WV-SFV531 / WV-SFV311 / WV-SFV310 / WV-SFV130M / WV-SFV130 / WV-SFV110M / WV-SFV110 / WV-SFR631L / WV-SFR531 / WV-SFR311 / WV-SFR310 / WV-SFN631L / WV-SFN611L / WV-SFN531 / WV-SFN311L / WV-SFN311 / WV-SFN310 / WV-SFN130 / WV-SFN110
	Type3	WV-SFV481 / WV-SFN480
	Type4	WV-X6531N / WV-X6511N / WV-S2531LTN / WV-S2531LN / WV-S2511LN / WV-S2231L / WV-S2211L / WV-S2131L / WV-S2131 / WV-S2130 / WV-S2111L / WV-S2110 / WV-S1531LTN / WV-S1531LN / WV-S1511LN / WV-S1132 / WV-S1131 / WV-S1112 / WV-S1111

#### Trademarks and registered trademarks

– "i-PRO EXTREME" logo is trademarks or registered trademarks of Panasonic Corporation.

#### Important

– Safety Precaution : Carefully read the Important Information, Installation Guide and operating instructions before using this product.  
– Panasonic cannot be responsible for the performance of the network and/or other manufacturers' products used on the network.

• All TV pictures are simulated.  
• Specifications are subject to change without notice.

DISTRIBUTED BY :

# Panasonic

<http://security.panasonic.com>

<http://www.facebook.com/PanasonicNetworkCamera>

(2A-110BA)