

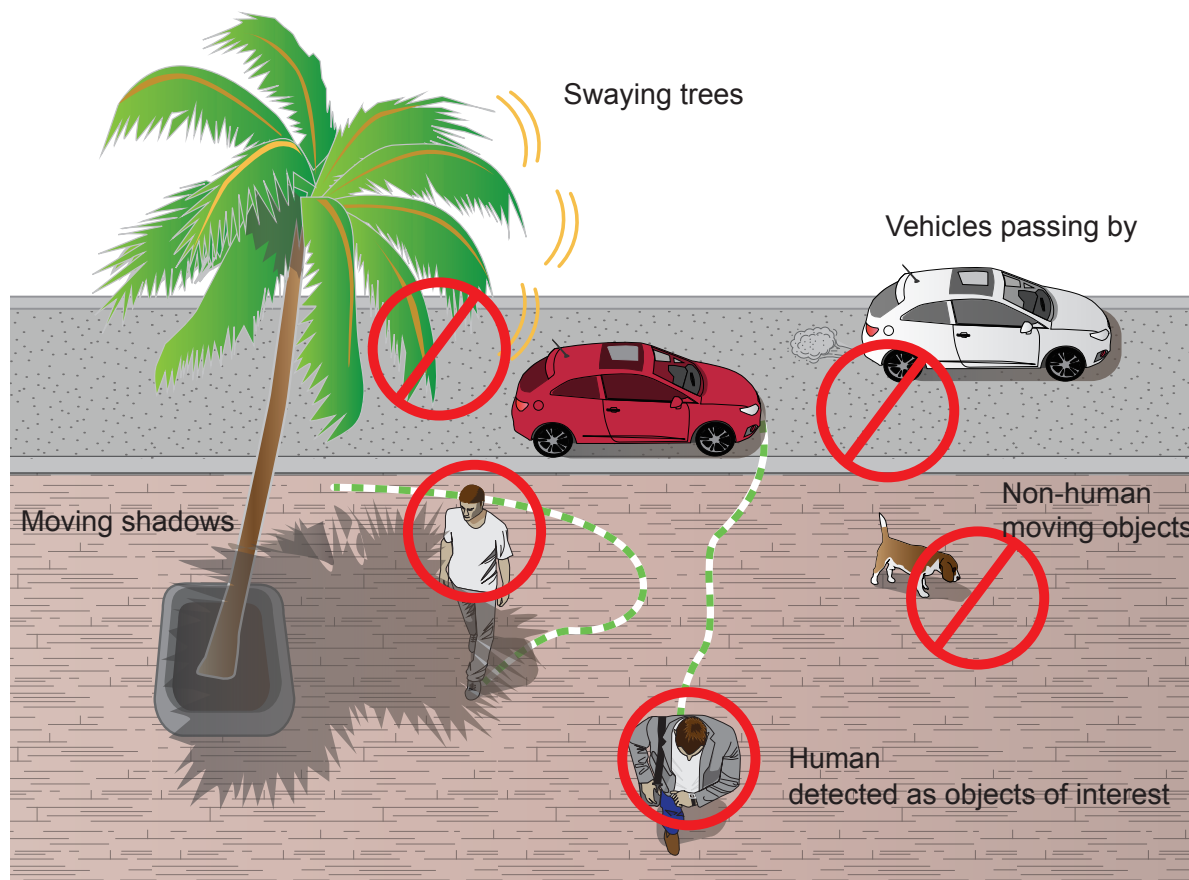
Smart Motion Detection

User Guide

The traditional motion detection relies heavily on the detection of pixel changes or motion vectors, and false alarms can be triggered by swaying trees, clouds floating by, or even the appearance of little animals. The Smart Motion detection, with Human detection and tunable time filter, can eliminate the defects of traditional motion detection and facilitate the configuration at a surveillance site.

A key feature in the Smart Motion detection is the Human detection. Based on a human silhouette database and the rapid responses via an artificial neural network technology, the Smart engine instantly recognizes human appearances in a video surveillance area. Since humans are the objects of interest in the majority of video surveillance, the Human detection feature enables users to quickly configure his installation.

With Human detection, light changes or swaying vegetation, vehicles passing by, or animal activities in the scene are not taken as event triggers. Only human activities will trigger an event. This helps reduce false alarms and the time and efforts for a camera configuration.



The activity data collected by the camera is displayed in comprehensive graphs and bar charts. You can monitor and compare the historical data acquired through a span of time and fine-tune the detection parameters with the ease of use of a graphical interface.

Revision History

- Rev. 1.0: Initial release



IMPORTANT:

Requirements for Running the Smart Motion Detection:

1. The embedded video tracking and counting analysis requires a monitoring session on Microsoft IE 10 or IE 11 browser.
2. Lens cleanliness is also required because dust spots or smears on dirty lens can produce miscalculation of pixels, correlation, and movements.
3. For other installation concerns, please refer to page 9, Considerations.
4. Avoid glass and reflective materials, such as aluminum foils, in the field of view. If unavoidable, you can use the Exclusive area settings to get rid of the side effects.
5. Make sure the camera is installed appropriately above the area of your interest, e.g., an entrance to building. Installation at an extremely busy area, e.g., a square or cross road section with dozens of passengers per minute, may not apply due to the system computing load.
6. Due to the system load, do not open two configuration web consoles at the same time.



NOTE:

The effectiveness of the Smart Motion detection slightly diminishes for objects lower than 130cm, such as children.

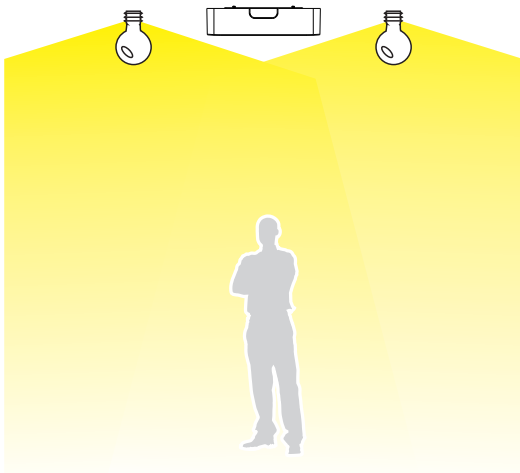
Applicable Cameras:

Currently the Smart Motion detection is supported on IB9365, IB9367, FD9165, and FD9365. These models come with an S-sensor that automatically detects its tilt angle. Older models may not have the computing power for running the detection algorithms.

Considerations

Note the following when planning the camera installation:

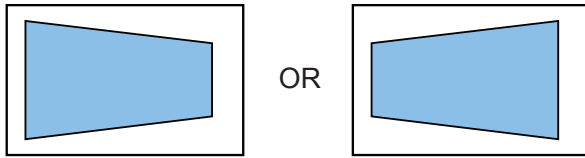
1. The installation site must be adequately lighted for optimal accuracy with video detection.
2. In the night mode, configure a schedule profile for the different lighting condition. In the night mode, the Smart Motion works if additional lighting is provided, e.g., using the on-board IR light.



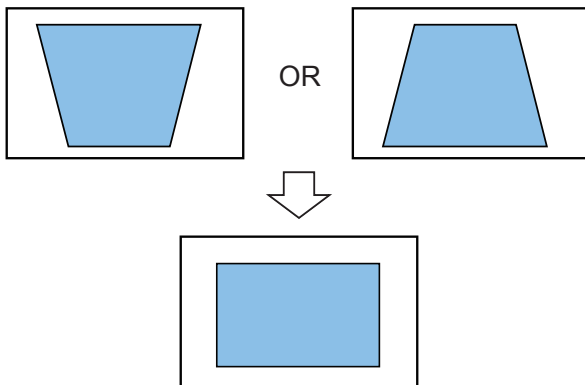
3. Because the horizontal and vertical keystone corrections are performed for an accurate detection, the height and tilt information of the camera must be correctly configured.

Use a laser distance meter to measure the installation height. The height information **MUST BE** correctly measured and entered in the camera's configuration page.

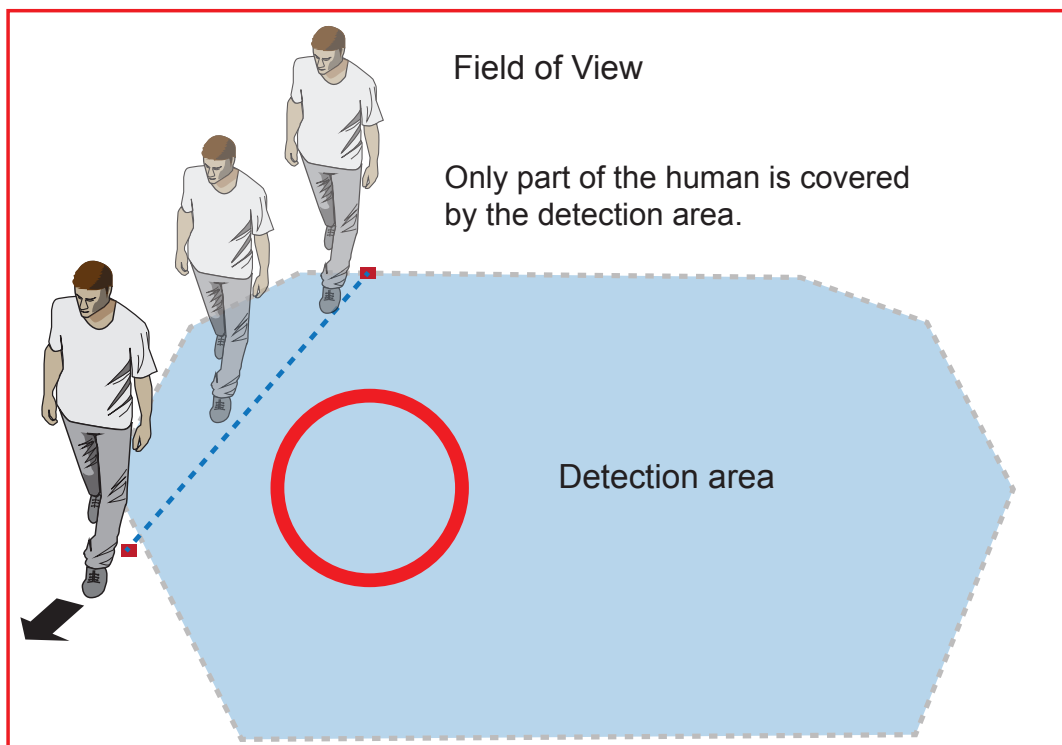
Horizontal keystone correction



Vertical keystone correction

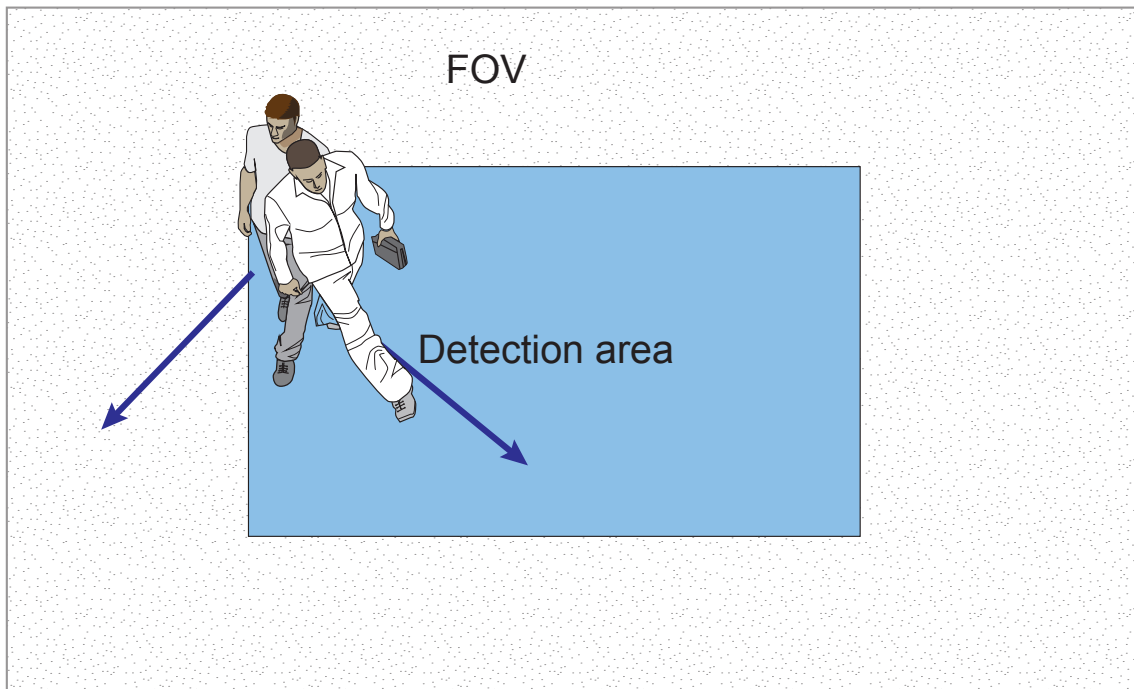


4. For Human detection, as long as a human silhouette is detected in the field of view, and his feet travelled through the Human detection area, he can be detected. Due to the visual perspective of lens, sometimes the entire body may not be all contained by the detection area.

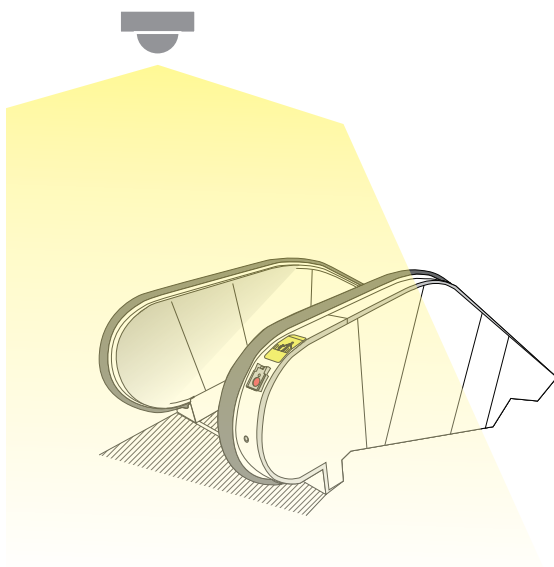


The counting takes place when a moving object appears in the detection area and moves across the detection line.

- Due to the optic concave characteristics of a lens, men can be temporarily blocked behind other men. When a man's head-shoulder feature is concealed, he may not be detected for the short moment.



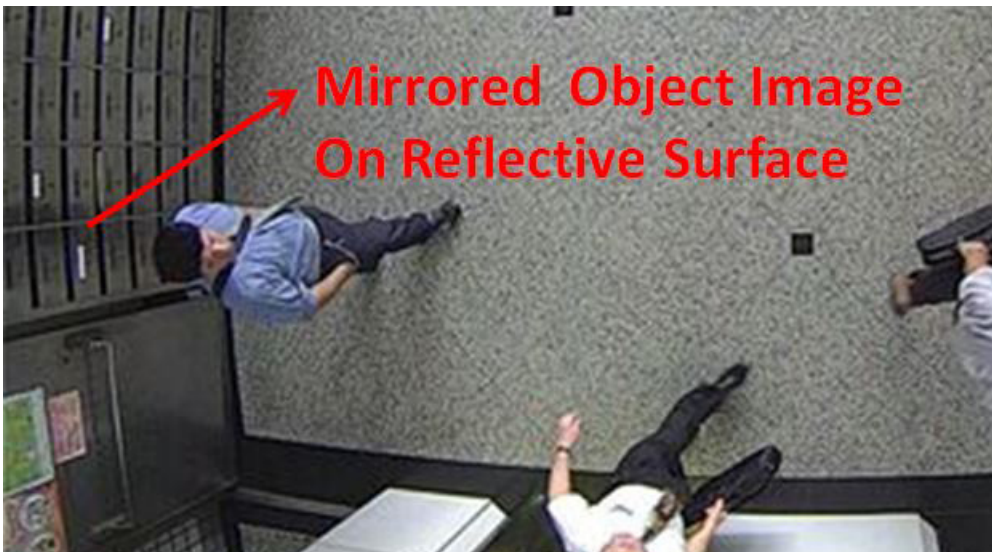
5. A man sitting, squated, or men lying on the floor may not be detected as a human, because his silhouette has been destroyed. Detection may also be affected when a human form is changed, e.g., a man's body is hidden behind a counter, or a man showing only the upper half of his body by leaning on a desk.
6. If the Human detection feature is not used, unnecessary objects should be avoided. A door, a floating curtain, and moving objects such as an escalator can cause mistakes with the detection.



7. The Human detection takes effects with standing or walking people. There is a limitation that the detection may not handle more than 30 people in the field. The field of view cannot cover a terraced structure.




8. Some other possible sources of interference may include: shadows on the wall, mirrored object image on the reflective surface.



Configuration:

1. Open a web console to the camera. Enter the **Configuration > Applications > Package management** page. Click on **VCA package** to open the monitoring and configuration page. You can also access the feature through **Configuration > Applications > Motion detection**.

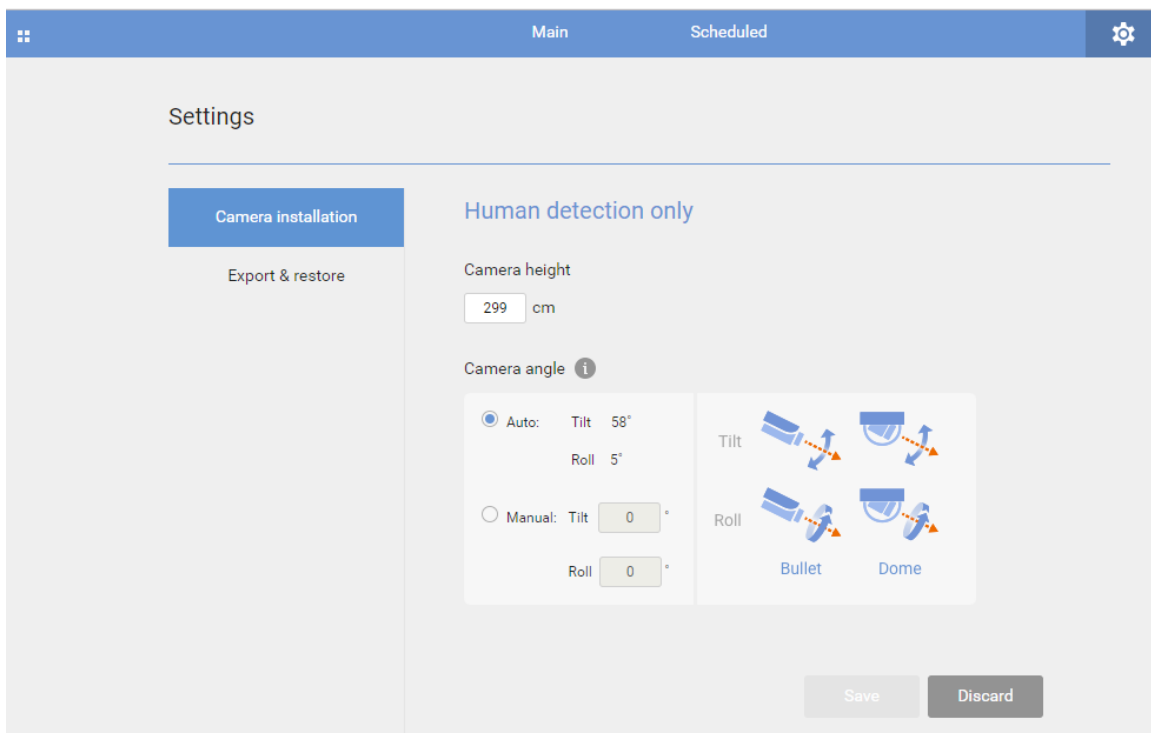
Version: 0101b_32

2. The utility defaults to the Main page. Click on the Settings  button on the upper-right corner to enter the Settings page. Note that if the Human detection feature is not enabled, the Human detection area does not display.

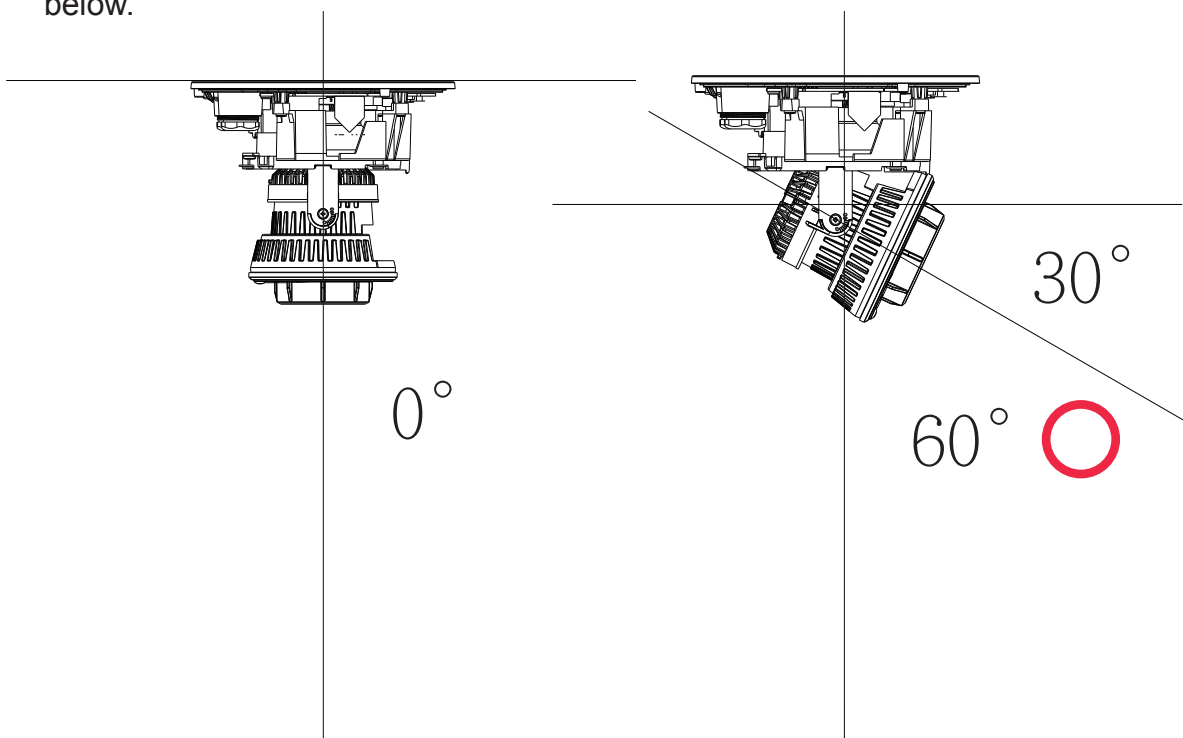
© VIVOTEK Inc. All rights reserved.

3. Enter the correct installation height. For the FD and IB 9xxx series that come with an S-sensor, the Camera angle can be automatically acquired. Select the Auto mode.

If using models that are not equipped with an S-sensor, you can manually enter the tilt and roll angles.

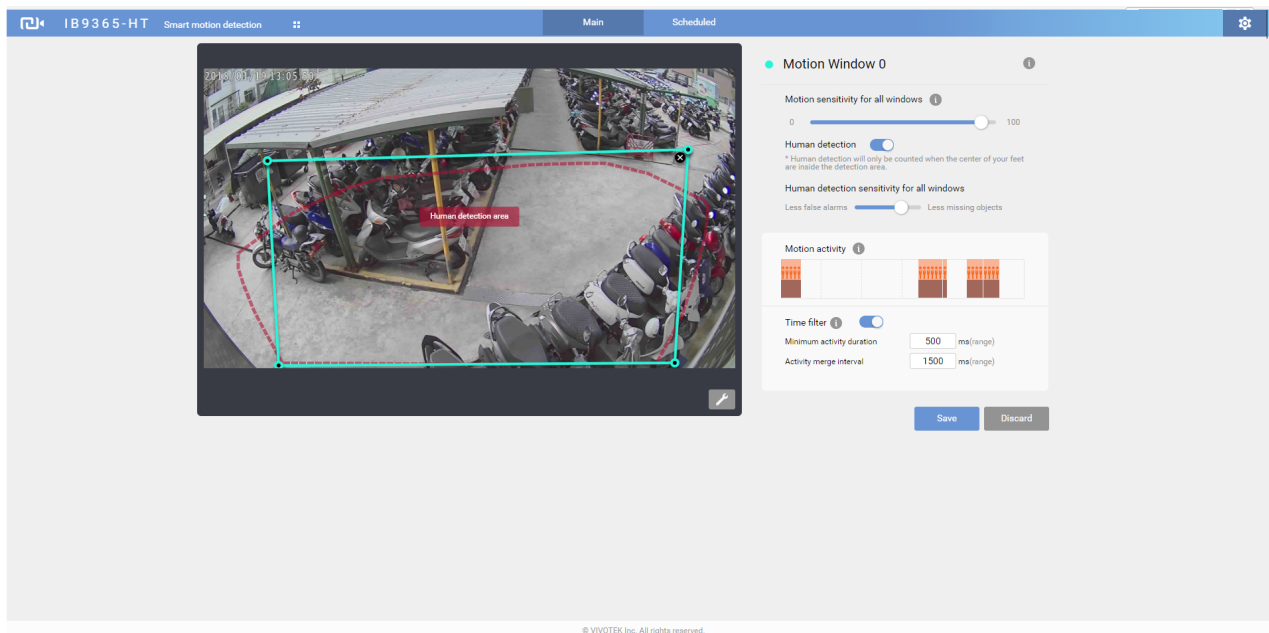


Note that the tilt angle correlates to the absolute downward direction. If a camera is installed on a ceiling, and its lens points straight downward, its tilt angle is 0 degree. If your camera lens is tilted, enter the angle related to the vertical line, e.g., 60° as shown below.

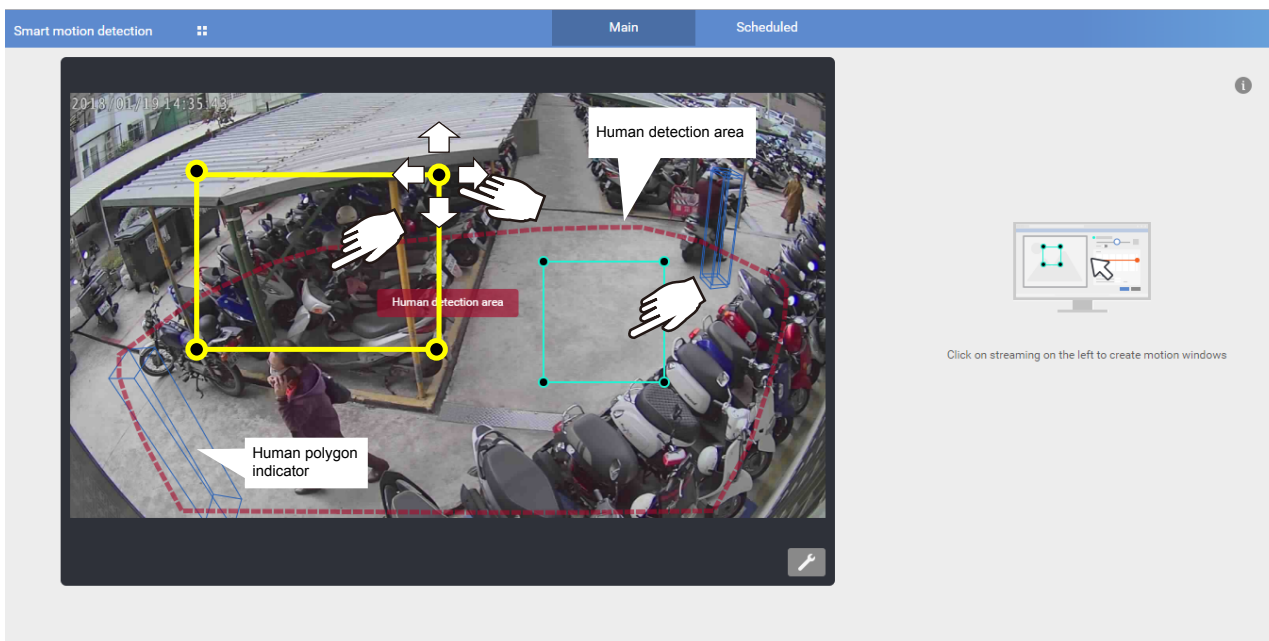


The roll angle is one that refers to the horizontal level line.

4. When done, click **Save** to preserve your settings.
5. Click on the **Main** tab to move to the main page.

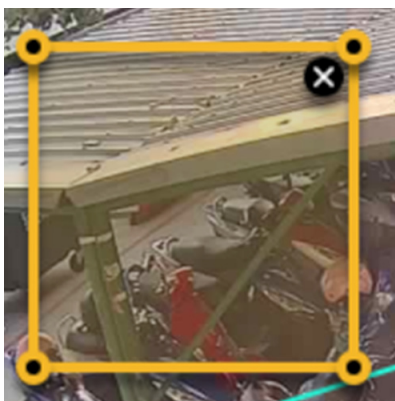


6. Click on the streaming window to create a detection window. If the need should arises, you can create up to **5** detection windows. Note that if the Human detection feature is not enabled, the Human detection area does not display.

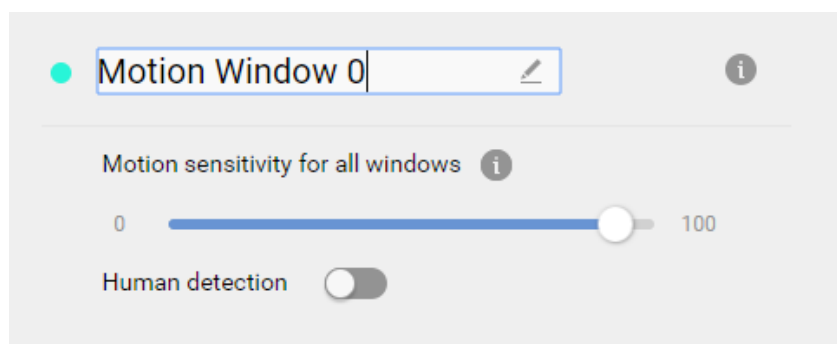


Change the coverage area of the window by dragging the corner marks. Note that the coverage area should comply with the Human detection area. The Human detection area is indicated by the red, dotted line.

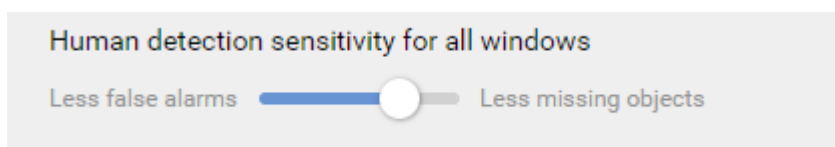
To remove an existing window, select and click on the X mark. A confirm box will prompt for the deletion of the window.



Click on the title bar to enter a name for the detection window.



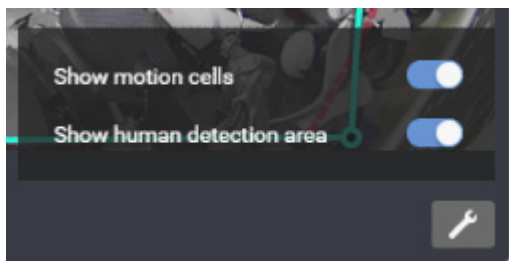
- **Human detection sensitivity for all windows:** In real-world applications, the effectiveness of Human detection can be affected by the following:
 - Fast moving, running in the scene,
 - Linger at the edges of FOV,
 - People crouching or crawling.



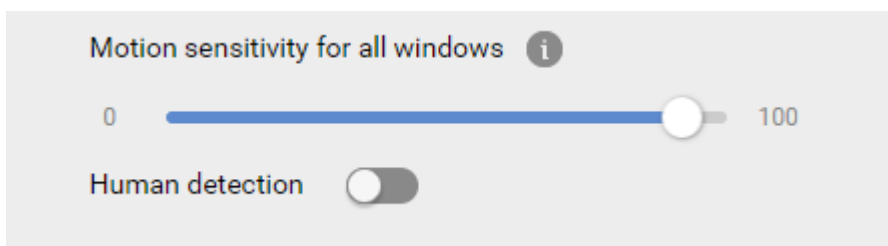
In such situations, users can consider tuning the sensitivity towards "**Less missing objects.**"

On the contrary, if tuned towards "Less false alarms," the detection algorithm will apply stricter human silhouette matching. In some situations, such as when a man crouches down to pick up an object, he will be temporarily undetected.

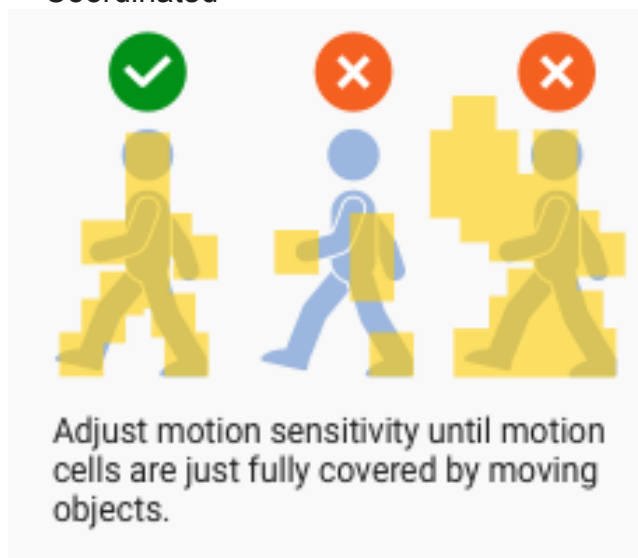
Click on the Tools button at the lower-right of the streaming window for the display options. By default, the human detection window displays on screen.



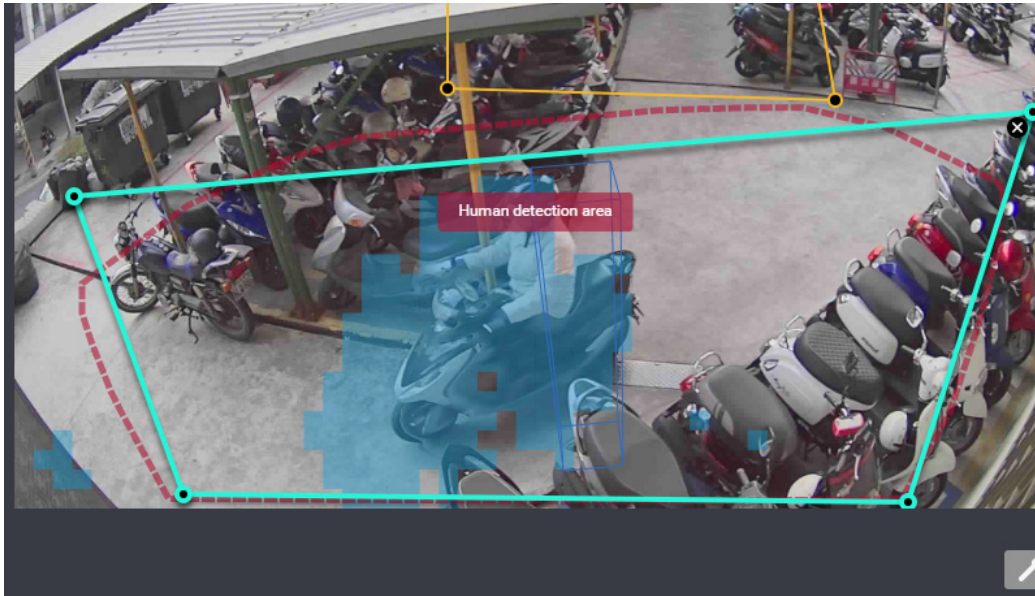
- **Show Motion Cells:** Displays the motion cells around a moving object. By default, when Human detection is enabled, the motion cells display is turned off.
7. Observe the human traffic on screen and tune the sensitivity until the motion cells match the human figures on screen. If you aim to detect larger objects, such as vehicles, the same applies. Tune the sensitivity so that the appearance of motion cells better coordinates the appearance of the objects of your interest.



Coordinated cells too few excessive cells



A real-world view of excessive motion cells is shown below. The higher the sensitivity, the higher the chance of generating more motion cells.



Shown below is the comparison of the same object detected through different sensitivity levels. At the sensitivity level 90, excessive motion cells can be observed; while at level 30, the detection ends up with insufficient motion cells.

Sensitivity: 90

Sensitivity: 30

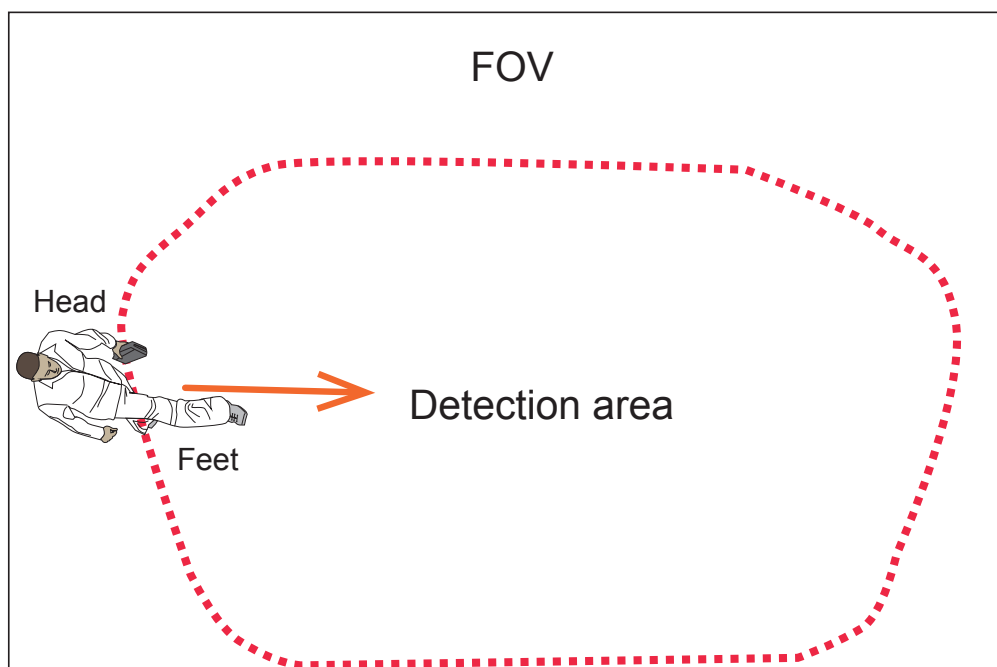


8. Configure the other parameters,

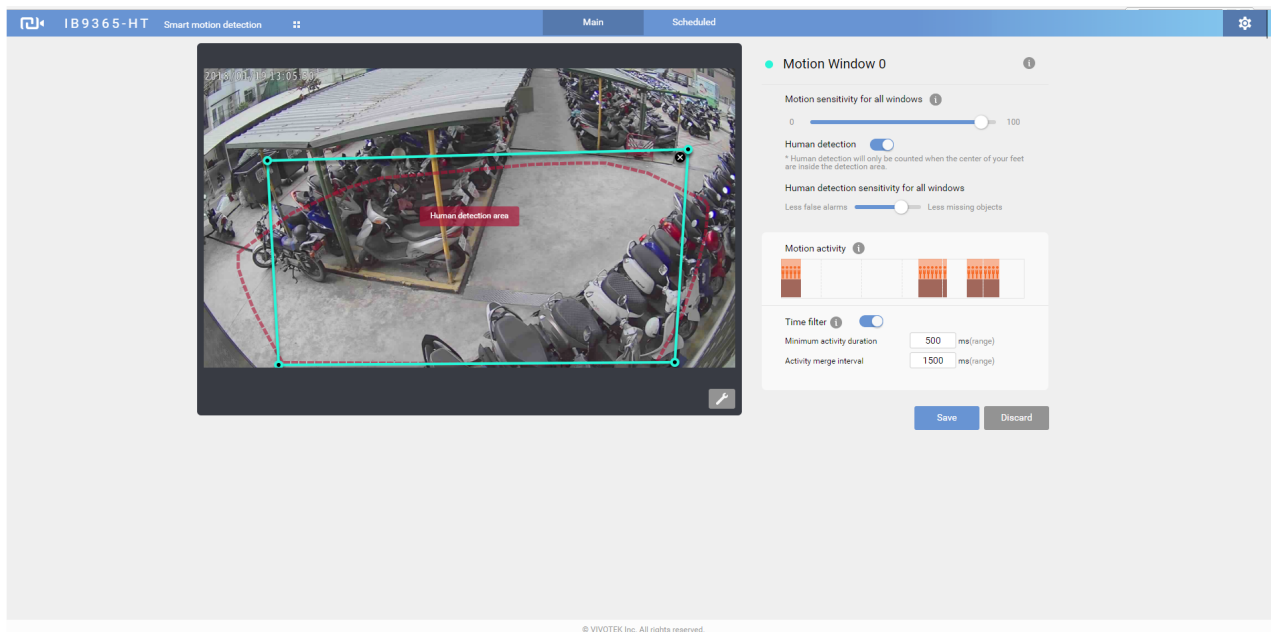
- **Show Human Detection Area:** Select to display the effective detection area currently detected by your camera.

Due to the visual perspective of the camera mounted on a ceiling or wall, a person enters the scene from the edge of the FOV with his feet appearing first, and then his/her head later. Only until he/she comes to a place within the perimeter of the detection area, the head and feet positions can be aligned. A person's feet are detected first, and if a detection area is configured too close to the edges of FOV, a person may not be appropriately recognized when his/her entire body profile has not entered the detection area.

People crossing the non-Detection area may not be properly recognized by the Human Detection function. Humans must have their feet stepping into or across the detection area.



With a live view, you can observe the effectiveness of human detection on screen.

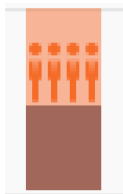


Tune the following if the need should arise.

Motion sensitivity: Use the slide bar to change the sensitivity. Default is 70%.

Human detection: Use this slide tab to enable or disable the Human detection feature. When Human detection is disabled, different configuration options will appear.

Motion activity: The detected human activities is displayed on a 1-minute time line. The consecutive 4 standing man icons indicate a detected presence persisted for 4 seconds.



Note that when watching the activities, the Motion activity displays for a selected window. If you have multiple detection windows, and a window is currently not selected on screen, its activities do not display.

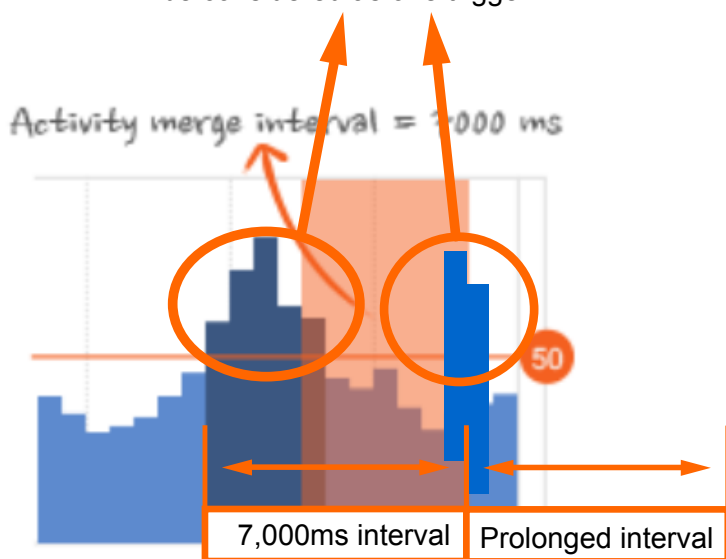
When activities occur, and the window is triggered, the window will be highlighted by a semi-transparent color.

Time filter:

Minimum activity duration: A human activity must persist for longer than this duration to be considered an effective trigger. This aims to avoid the situation when one enters and leaves the scene very quickly.

Activity merge interval: Setting this interval aims to avoid the stop-and-move maneuver by some thieves. The activities occurred during this duration is considered as one trigger. If activities occur before the end of the interval, the interval will be prolonged, e.g., 7 + 7 seconds.

If activities occur before the end of this interval, the inconsecutive actions will be considered as one trigger.



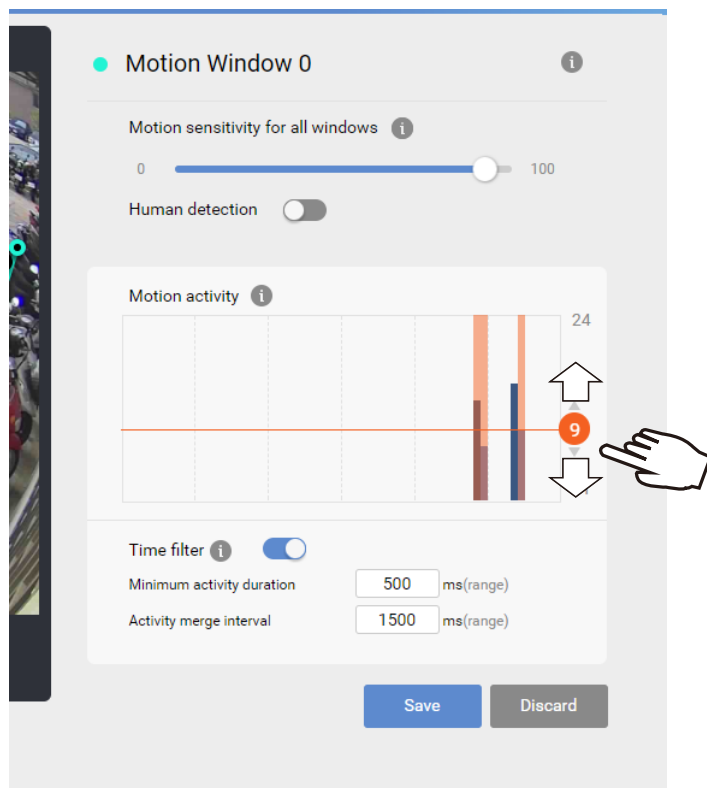
The Time filter provides two configurable parameters:

Minimum activity duration: A human activity must persist for longer than this duration to be considered an effective trigger. This aims to avoid the situation when an object enters and leaves the scene very quickly.

Activity merge interval: This feature can eliminate the redundant counts by people who linger in the area with intermittent movements such as small paces. The activities occurred during the prolonged interval is considered as one trigger. If activities occur before the end of the interval, the interval will be prolonged, e.g., the original 7 sec. interval is extended by another 7 seconds.

Motion activity: (This option is available only if you disable Human detection)

Click and drag the slide bar to change the detection threshold while watching the activities on screen. The activity chart covers a 61 seconds time span. The Y-axis indicates the percentage of alarmed pixels in the field of view.



The Motion sensitivity can be associated with object sizes. The higher the sensitivity, the smaller the object size. Change the trigger level if necessary, judging from the live view of your scene.

If you do not want motions to be triggered by small objects, e.g., little animals such as birds, configure a higher threshold.

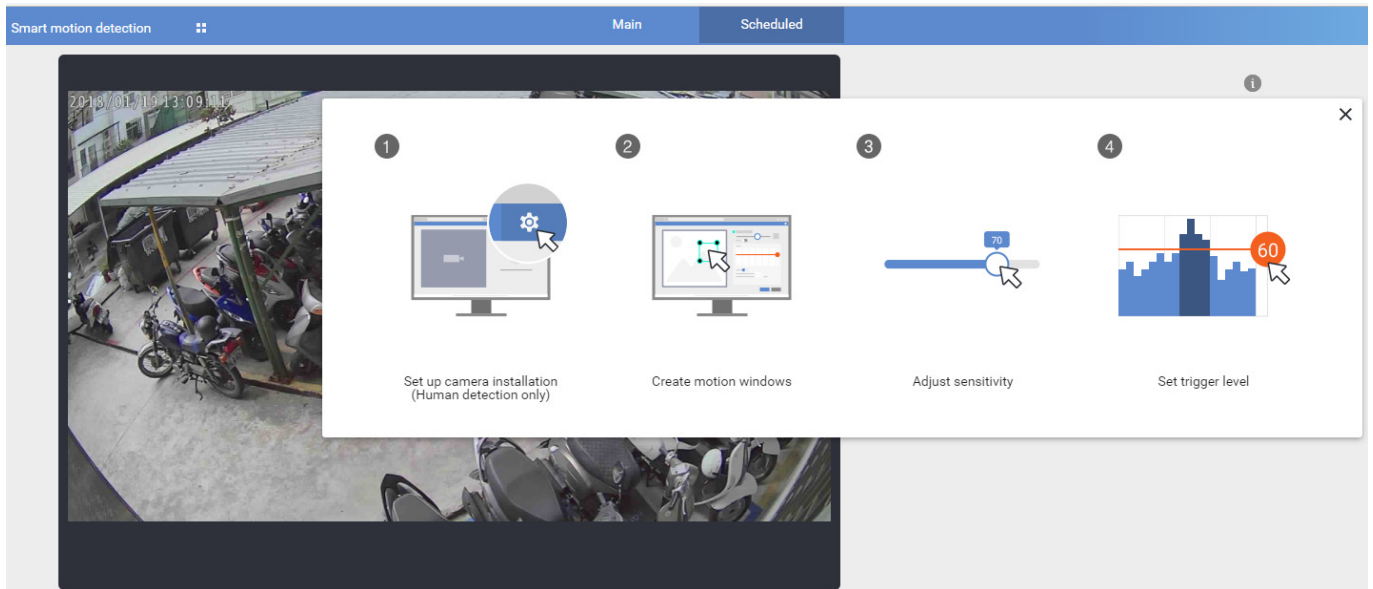
Human detection does not need this activity threshold setting. It works on the detection of the silhouettes of human body.

The blue bars indicate the activities within the surveillance scene. An effective trigger is indicated by a semi-transparent red bar.

Scheduled mode:

The Scheduled mode allows you to apply different motion detection configurations for different lighting conditions, such as in the night mode. Another 5 detection windows are available for the Scheduled mode. Individual trigger levels can be configured per window.

Click the Scheduled tab to open the Scheduled configuration window. An illustrated work flow will prompt.



Use the same configuration methods as previously described to configure the detection in a scheduled mode. Note that In the night mode, the applicable sensitivity range tends to fall between middle and high.

When Motion configuration is made, associate the event delivery with the occurrence of motion events. For example, you can configure the camera to record the related video clips by the time the motion event occurs, or sending an Email containing the snapshot of the event.



Configure the motion event notification in Configuration > Event settings.

Event name:

Enable this event

Priority:

Detect next motion detection or digital input after second(s).

Trigger

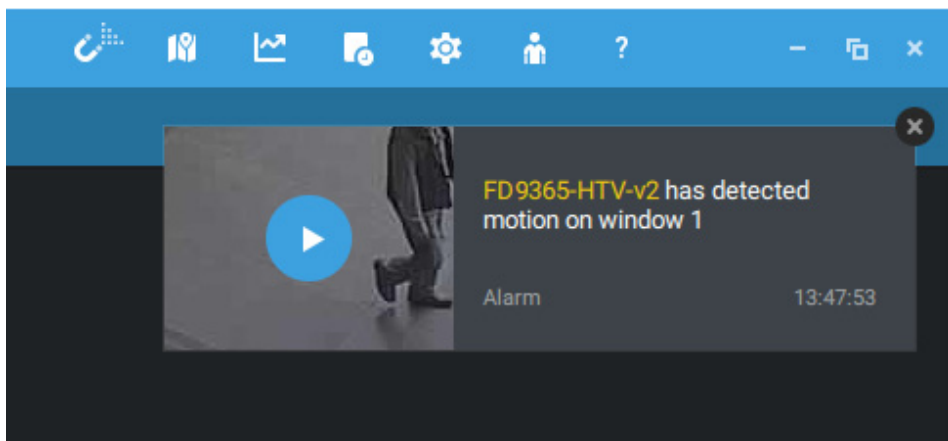
- Video motion detection
 - Normal: motion_c0_win_i0_name motion_c0_win_i1_name motion_c0_win_i2_name motion_c0_win_i3_name motion_c0_win_i4_name
 - Profile: motion_c0_profile_i0_win_i0_name motion_c0_profile_i0_win_i1_name motion_c0_profile_i0_win_i2_name motion_c0_profile_i0_win_i3_name motion_c0_profile_i0_win_i4_name
 - Note: Please configure [Motion detection](#) first
- Periodically
 - Trigger every other minute(s)
- Digital input
 - Digital input 1 : Active Normal to Active Active to Normal
 - Digital input 2 : Active Normal to Active Active to Normal
- System boot
- Recording notify
- Audio detection

1. Schedule

2. Trigger

3. Action

Motion events prompt on VIVOTEK’s central management software, VAST. A single click on the event prompt can play back the related video footage.



Motion events are tagged and can be retrieved from the event list using the event search function.

