



IP9165-LPC

Box Network Camera



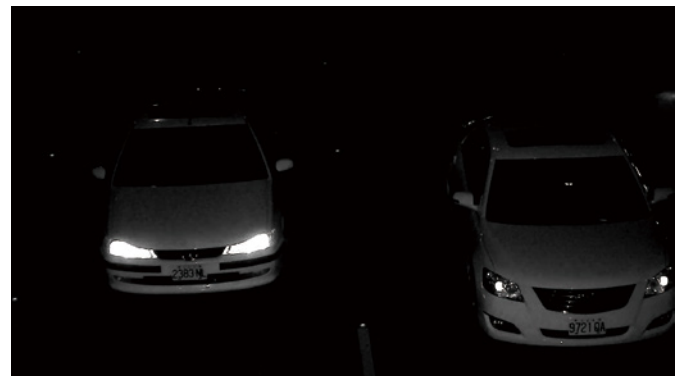
2MP 60fps • SNV II • WDR Pro II • Remote Back Focus • License Plate Capture

VIVOTEK's IP9165-LPC is a professional H.265 Full HD box network camera offering specialized solutions for License Plate Capture with a unique headlight filter design for traffic monitoring. Featuring dedicated LPC firmware and a compatible lens, the IP9165-LPC provides three different scene modes: LPC-Parking, LPC-Street, and LPC-Highway to match different traffic applications in which cars move at different speeds. With a suitable selection of external IR illuminators, the IP9165-LPC camera will be ideal for 24/7 license plate capture, producing high-detail polished images for reliable license plate recognition of cars travelling up to speeds of 110mph (180km/h).

Equipped with a P-iris lens and a headlight filter design, the camera is capable of capturing clear, high quality video with a resolution of 1920x1080 at a smooth 60 fps in any condition. Further, by employing VIVOTEK's WDR Pro II, 3DNR and SNV II technologies, no matter whether in high contrast or in low light environments, the camera will ensure clear image quality for license plate capture or traffic monitoring. Finally, VIVOTEK's RBF (Remote Back Focus) system for easy focus adjustments and value-added features like DIS and support for i-CS lens ensure image stability and intelligent, precise focus, and in conjunction make the IP9165-LPC the perfect LPR solution for any application, in any condition.

Key Features

- 60 fps @ 1920x1080
- H.265 Compression Technology
- 12 ~ 40 mm, Remote Back Focus, P-iris Lens
- Supreme Anti-Glare Capability by Headlight Filter Design
- SNV II (Supreme Night Visibility II) for Low Light Conditions
- WDR Pro II (140dB) to Provide Extreme Visibility in Extremely Bright or Dark Environments
- Remote Back Focus for Easy Focus Adjustments
- DIS (Digital Image Stabilization) to Control Image Stabilization
- Video Rotation for Corridor View
- i-CS (intelligent-CS) Lens Supported
- Lens Profile for Camera Quality Optimization



Supreme Anti-Glare Capability:
Clear Image Captured with IR Illuminators and Headlight Filter

Technical Specifications

Model	IP9165-LPC
System Information	
CPU	Multimedia SoC (System-on-Chip)
Flash	128MB
RAM	1GB
Camera Features	
Image Sensor	1/2" Progressive CMOS
Maximum Resolution	1920x1080
Lens Type	Vari-focal, Remote Back Focus
Focal Length	f = 12 ~ 40 mm
Aperture	F1.8 ~ F2.3
Iris type	P-iris (i-CS/DC-iris reserved)
Field of View	11.6° ~ 34.2° (Horizontal) 6.6° ~ 18.7° (Vertical) 13.3° ~ 39.8° (Diagonal)
Shutter Time	1/60 sec. to 1/16,000 sec.
WDR Technology	WDR Pro II
Day/Night	Yes
Removable IR-cut Filter	Yes (Headlight filter design for Anti-Glare)
Minimum Illumination	0.08 Lux @ F1.8 (Color)
Pan/Tilt/Zoom Functionalities	ePTZ: 48x digital zoom (4x on IE plug-in, 12x built in)
On-board Storage	Slot type: MicroSD/SDHC/SDXC card slot (Max. SD card capacity:128GB) Seamless Recording
Video	
Compression	H.265, H.264, MJPEG
Maximum Frame Rate	60 fps @ 1920x1080
Maximum Streams	4 simultaneous streams
S/N Ratio	66.2 dB
Dynamic Range	140 dB
Video Streaming	Adjustable resolution, quality and constant, bit rate control; Smart Stream III
Image Settings	Adjustable image size, quality and bit rate; Time stamp, text overlay, flip & mirror; Configurable brightness, contrast, saturation, sharpness, white balance, exposure control, gain, backlight compensation, AE speed, privacy masks; Scheduled profile settings, HLC, defog, 3DNR, DIS, video rotation, lens profile
Audio	
Audio Capability	Two-way audio
Compression	G.711, G.726
Interface	External microphone input External line output
Network	
Users	Live viewing for up to 10 clients
Protocols	IPv4, IPv6, TCP/IP, HTTP, HTTPS, UPnP, RTSP/ RTP/RTCP, IGMP, CIFS/SMB, SMTP, FTP, DHCP, NTP, DNS, DDNS, PPPoE, CoS, QoS, SNMP, 802.1X, UDP, ICMP, ARP, TLS
Interface	10 Base-T/100 Base-TX/1000 Base-T Ethernet (RJ-45) *It is highly recommended to use standard CAT5e & CAT6 cables which are compliant with the 3P/ETL standard.
ONVIF	Supported, specification available at www.onvif.org
Intelligent Video	
Video Motion Detection	Five-window video motion detection
Alarm and Event	
Alarm Triggers	Motion detection, manual trigger, digital input, periodical trigger, system boot, recording notification, camera tampering detection, audio detection, advanced motion detection, MicroSD card life expectancy
Alarm Events	Event notification using digital output, HTTP, SMTP, FTP, NAS server and MicroSD card File upload via HTTP, SMTP, FTP, NAS server and MicroSD card
General	
Connectors	RJ-45 cable connector for Network/PoE connection *1 Audio input *1 Audio output *1 DC 12V/AC 24V power in *1 Digital input *2 Digital output *2 RS485 *1 BNC *1
LED Indicator	System power and status indicator
Power Input	IEEE 802.3af PoE Class 0 DC 12V AC 24V
Power Consumption	DC 12V: Max. 9 W AC 24V: Max. 18 W PoE: Max. 9.06 W
Dimensions	151 x 70 x 61 mm (w/o lens) 203 x 70 x 61 mm (w/ lens)
Weight	680 g (w/o lens) 790 g (w/ lens)
Safety Certifications	CE, LVD, FCC Class B, VCCI, C-Tick, UL
Operating Temperature	Starting Temperature: 0°C ~ 50°C (32°F ~ 122°F) Working Temperature: -10°C ~ 60°C (14°F ~ 140°F)
Humidity	90%
Warranty	36 months
System Requirements	
Operating System	Microsoft Windows 8/7
Web Browser	Mozilla Firefox 7~43 (streaming only) Internet Explorer 10/11

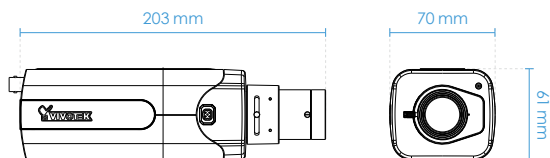
Technical Specifications

Other Players VLC: 1.1.11 or above
 QuickTime: 7 or above








Included Accessories

Others Quick installation guide, warranty card,
 lens, screw pack

Dimensions



Compatible Accessories

Enclosures		Lens	
 <p>AE-23E Outdoor enclosure, PoE input, IP68, IK10</p>	 <p>AE-244 Outdoor enclosure, built-in 50m IR, PoE input, IP68, IK10</p>	 <p>AL-239 8 ~ 80mm, F1.6, DC-iris</p>	 <p>AL-24A 12 ~ 40mm, F1.8, P-iris (Standard Package)</p>
Lens			
 <p>AL-24B 3.6 ~ 17mm, F1.5, P-iris</p>	 <p>AL-24D 25 ~ 135mm, F1.8, P-iris</p>	 <p>AL-251 3.9 ~ 10mm, F1.5, i-CS</p>	