



MA8391-ETV

Multi-Sensor Adjustable Dome Camera

Accessories



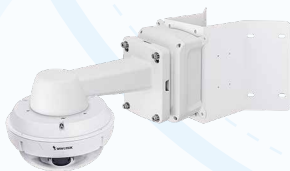
Wall Mount



Pole Mount



Pendant Mount



Corner Mount



Parapet Mount

MA8391-ETV

Multi-Sensor Adjustable Dome Camera

Pendant Mount



Item	Number	Description
AM-114	1	Pendant Head (Outdoor)
AM-116	1	Pendant Pipe (20 cm) (1.5" PS11)
AM-117	1	Pendant Pipe (40 cm) (1.5" PS11)
AM-529	1	Mounting Adapter (1.5" PS11 Male Connector)

* AM-116 and AM-117 Pendant Pipes can be connected together multiple times to extend length of pendant mount as required by installation.
 * To mount the multi-adjustable camera to AM-529, please use the inbox plate included in the package.



MA8391-ETV

Multi-Sensor Adjustable Dome Camera

Wall Mount



Item	Number	Description
AM-21C	1	Wall Mount Bracket
AM-718	1	Junction Box (Optional)

* To mount the multi-adjustable camera to AM-21C, please use the inbox plate included in the package.



MA8391-ETV

Multi-Sensor Adjustable Dome Camera

Pole Mount -1



Item	Number	Description
AM-21C	1	Wall Mount Bracket
AM-314	1	Pole Mount Adapter
AM-718	1	Junction Box (Optional)

* To mount the multi-adjustable camera to AM-21C, please use the inbox plate included in the package.



MA8391-ETV

Multi-Sensor Adjustable Dome Camera

Pole Mount -2



Item	Number	Description
AM-21C	1	Wall Mount Bracket
AM-315	1	Pole Mount Adapter
AM-718	1	Junction Box (Optional)

* To mount the multi-adjustable camera to AM-21C, please use the inbox plate included in the package.

MA8391-ETV

Multi-Sensor Adjustable Dome Camera

Corner Mount



Item	Number	Description
AM-21C	1	Wall Mount Bracket
AM-414	1	Corner Mount Adapter
AM-718	1	Junction Box (Optional)



MA8391-ETV

Multi-Sensor Adjustable Dome Camera

Parapet Mount



Item	Number	Description
AM-231	1	Parapet Mounting Bracket
AM-529	1	Mounting Adapter (1.5" PS11 Male Connector)

* To mount the multi-adjustable camera to AM-529, please use the inbox plate included in the package.