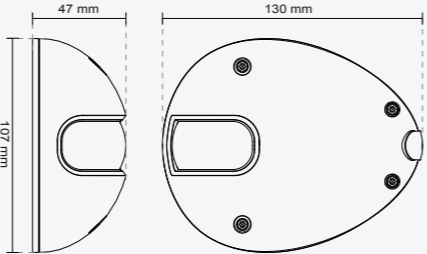


Technical Specifications

Lens <ul style="list-style-type: none"> Board lens, Fixed, f = 2.8 mm, F2.0 	On-board Storage <ul style="list-style-type: none"> MicroSD/SDHC card slot Stores snapshots and video clips
Field of View <ul style="list-style-type: none"> 110° (horizontal) 81.5° (vertical) 142° (diagonal) 	Security <ul style="list-style-type: none"> Multi-level user access with password protection IP address filtering HTTPS encrypted data transmission 802.1X port-based authentication for network protection
Shutter Time <ul style="list-style-type: none"> 1/5 sec. to 1/32,000 sec 	Users <ul style="list-style-type: none"> Live viewing for up to 10 clients
Image Sensor <ul style="list-style-type: none"> 1/2.7" progressive scan CMOS sensor in 1920x1080 resolution 	Weight <ul style="list-style-type: none"> Net: 450 g
Minimum Illumination <ul style="list-style-type: none"> 0.2 Lux @ F2.0 	LED Indicator <ul style="list-style-type: none"> System restore status indicator
Video <ul style="list-style-type: none"> Compression: H.264, MJPEG & MPEG-4 Streaming: <ul style="list-style-type: none"> Multiple simultaneous streams H.264 streaming over UDP, TCP, HTTP or HTTPS MPEG-4 streaming over UDP, TCP, HTTP or HTTPS H.264/MPEG-4 multicast streaming MJPEG streaming over HTTP or HTTPS Supports activity adaptive streaming for dynamic frame rate control Supports video cropping for bandwidth saving Supports ePTZ for data efficiency Supports 3GPP mobile surveillance Frame rates: <ul style="list-style-type: none"> H.264: <ul style="list-style-type: none"> Up to 30 fps at 1920x1080 MPEG-4: <ul style="list-style-type: none"> Up to 30 fps at 1920x1080 MJPEG: <ul style="list-style-type: none"> Up to 30 fps at 1920x1080 	Power <ul style="list-style-type: none"> Power consumption: <ul style="list-style-type: none"> Max. 4.3 W Max. 7.5 W (with heater) 802.3af compliant Power-over-Ethernet (Class 3) (MD8562) DC 12-36V Input (MD8562D)
Image Settings <ul style="list-style-type: none"> Adjustable image size, quality and bit rate Time stamp and text caption overlay Flip & mirror Configurable brightness, contrast, saturation, sharpness, white balance and exposure AGC, AWB, AES WDR enhanced BLC (Backlight Compensation) Supports privacy masks 	Housing <ul style="list-style-type: none"> Vandal-proof IK10-rated metal housing Weather-proof IP67-rated housing
Audio <ul style="list-style-type: none"> Compression: <ul style="list-style-type: none"> GSM-AMR speech encoding, bit rate: 4.75 kbps to 12.2 kbps MPEG-4 AAC audio encoding, bit rate: 16 kbps to 128 kbps G.711 audio encoding, bit rate: 64 kbps, μ-Law or A-Law mode selectable Interface: <ul style="list-style-type: none"> External microphone input Supports audio mute 	Approvals <ul style="list-style-type: none"> CE, LVD, FCC, VCCI, C-Tick EN50155
Networking <ul style="list-style-type: none"> 10/100 Mbps Ethernet, RJ-45 Onvif support Protocols: IPv4, IPv6, TCP/IP, HTTP, HTTPS, UPnP, RTSP/RTP/RTCP, IGMP, SMTP, FTP, DHCP, NTP, DNS, DDNS, PPPoE, CoS, QoS, SNMP, and 802.1X 	Operating Environments <ul style="list-style-type: none"> Temperature: -25°C ~ 50°C (-13°F ~ 122°F) Humidity: 90% RH
Alarm and Event Management <ul style="list-style-type: none"> Triple-window video motion detection Tamper detection One D/I for external sensor and alarm Event notification using HTTP, SMTP, or FTP Local recording of MP4 file 	Viewing System Requirements <ul style="list-style-type: none"> OS: Microsoft Windows 7/Vista/XP/2000 Browser: Mozilla Firefox, Internet Explorer 6.x or above Cell phone: 3GPP player Real Player: 10.5 or above Quick Time: 6.5 or above
	Installation, Management, and Maintenance <ul style="list-style-type: none"> Camera angle adjustment: Tilt 90° (0° ~ 90°) Installation Wizard 2 32-CH ST7501 recording software Supports firmware upgrade
	Applications <ul style="list-style-type: none"> SDK available for application development and system integration
	Warranty <ul style="list-style-type: none"> 36 months
	Dimension <ul style="list-style-type: none"> Camera: 130 mm (D) x 107 mm (W) x 47 mm (H) Cable length: 520 mm Cable diameter: \varnothing 7.2 mm; Max width: \varnothing 14 mm 

All specifications are subject to change without notice. Copyright © 2011 VIVOTEK INC. All rights reserved. P/N: 971005200

SUPREME
A NEW DEFINITION OF HD



Fixed Dome Network Camera MD8562/62D

2MP · Vandal-proof · Mobile Surveillance · WDR Enhanced



VIVOTEK MD8562/62D is a series of compact, 2-Megapixel network cameras geared toward transportation applications, such as buses, trains and other moving vehicles. With full EN50155 compliance & IP67-rated design, the camera can withstand shock, vibration, humidity, dust and temperature fluctuations, maintaining stable and reliable video capturing during vehicle movement. Furthermore, the vandal-proof metal housing provides robust protection from vandalism. As such, the combination of high resolution imaging and protective housing endows the MD8562/62D with the rugged reliability required to maximize passenger safety and optimize mobile surveillance.

By utilizing high-definition 1920x1080 resolution, the MD8562/62D delivers extremely clear and detailed images, achieving accurate identification of people or objects with ease. With WDR enhancement, users are able to identify image details under extreme lighting conditions, dark or bright. Video footage of in-vehicle passenger activities or vehicle accidents captured with this camera can thus be used for post-event forensic evidence.

With the tamper detection feature, the MD8562/62D are truly robust and intelligent cameras that keep security staff notified once suffering video loss from being blocked or spray-painted. PoE (Power-over-Ethernet) also allows the MD8562 to be operated and powered with a single Ethernet cable, giving greater ease of installation. In order to facilitate on-board storage and data portability, the camera is also complete with a MicroSD/SDHC card slot for local recording. With such a broad spectrum of advanced features, the MD8562/62D are the best choices for mobile surveillance.



VIVOTEK INC.
6F, No.192, Lien-Cheng Rd., Chung-Ho, New Taipei City, 235, Taiwan, R.O.C.
T: +886-2-82455282 | F: +886-2-82455532 | E: sales@vivotek.com

VIVOTEK USA, INC.
2050 Ringwood Avenue, San Jose, CA 95131
T: 408-773-8686 | F: 408-773-8298 | E: salesusa@vivotek.com

Ver 1.0

VIVOTEK
BUILT WITH RELIABILITY

Easy Mobile Installation

With compact size and discreet design, the MD8562/62D can be easily installed on sloped surfaces of vehicles and seamlessly blend with the surrounding environment, reducing customers' unease towards being under surveillance.

Moreover, VIVOTEK offers two types of power supply solutions: PoE or DC input. The MD8562 is compliant with IEEE 802.3af PoE switches and minimizes cabling issues during installation or maintenance. The MD8562D is also compatible with DC 12V, 24V or 36V mobile power inputs, bringing great flexibility for mobile security applications.



Reliability in Demanding Environments

Due to demanding requirements for protection against extreme vibration, humidity and temperature, network cameras used for mass transit applications require a high level of reliability. In compliance with international standards, the MD8562/62D guarantee the highest level of performance and stability for mass transit surveillance.

• EN50155 Compliance

With resistance to an extended temperature range of -25 to 50 °C, the MD8562/62D are compliant with the EN50155 standard for electronic equipments operating in railway vehicles. It also meets the EN50155's shock and vibration requirements to provide high reliability and rugged performance during movement.



• IP67-rated Housing

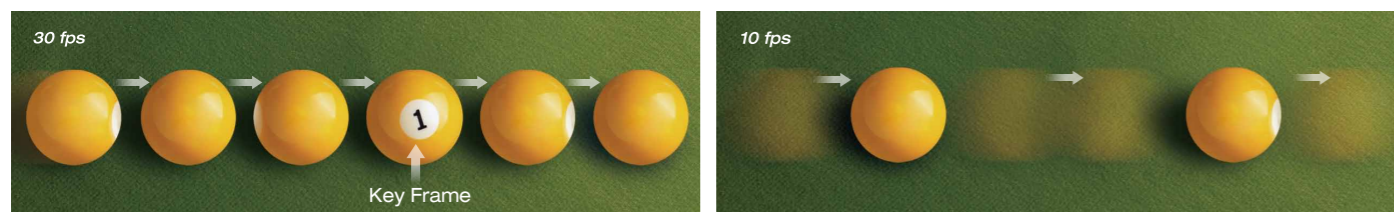
The MD8562/62D's weather-proof IP67-rated housing provides protection from extreme weather conditions, dust and moisture. It offers total protection against contamination and withstands water jet ingress, allowing for operation in demanding environments.

1080p Resolution at Full Frame Rate

VIVOTEK MD8562 and MD8562D are able to transmit 30 fps @ 1080p with H.264 compression, while traditional megapixel cameras generally achieve only 10 to 15 fps due to hardware limitations.



The ability to view and record footage at a full frame rate enables much more effective surveillance. For example, if a person or object of interest passes quickly through the camera's field of view during an event, a 10 fps frame rate might mean only a single frame with the target is captured, while the MD8562/62D would capture three frames, providing a complete record of the event and accurate identification of the target.



Enhanced Security

• Tamper Detection

This function can detect changes caused by camera tampering, such as blockage and spray-painting, and send out alerts so that the operator can address security issues immediately, making the MD8562/62D an invaluable solution for vandalism-prone areas.

• Vandal-proof IK10-rated Housing

Equipped with protective housing, the MD8562/62D are protected from vandalism and high-risk environments. The metal base and polycarbonate cover enable the MD8562/62D to withstand high impacts, thereby ensuring functional operation at all times.

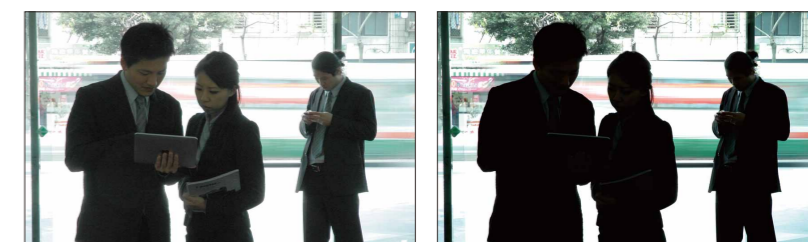
• Uninterrupted Recording

The MD8562/62D feature a MicroSD/SDHC card slot to provide short-term and portable video storage on removable memory cards, thereby providing a higher level of convenience and data protection. With this feature, because camera images are continuously recorded on the MicroSD/SDHC card, the chance of data loss due to network disconnection is greatly reduced.



Adapted for High-contrast Lighting Conditions

When a camera is used in a high contrast, backlight, glare or light reflective environment, such as a building entrance, ATM or window, a subject may appear dark and unrecognizable. WDR Enhanced technology compensates for the unbalanced lighting, restoring detail throughout the field of view, so as to give user unparalleled visibility to identify images.



Product Features

MD8562/62D Fixed Dome Network Camera

2MP · Vandal-proof · Mobile Surveillance · WDR Enhanced

- 2-Megapixel CMOS Sensor
- Up to 30 fps @ 1080p Full HD
- Wide Angle Fixed Lens
- EN50155 Compliance for Professional Mobile Surveillance
- Real-time H.264, MPEG-4 and MJPEG Compression (Triple Codec)
- WDR Enhancement for Unparalleled Visibility in Extremely Bright or Dark Environments
- Vandal-proof IK10-rated and Weather-proof IP67-rated Housing
- Built-in 802.3af Compliant PoE (MD8562)
- Built-in MicroSD/SDHC Card Slot for On-board Storage

