



Datenblatt - Fiche technique - Data sheet

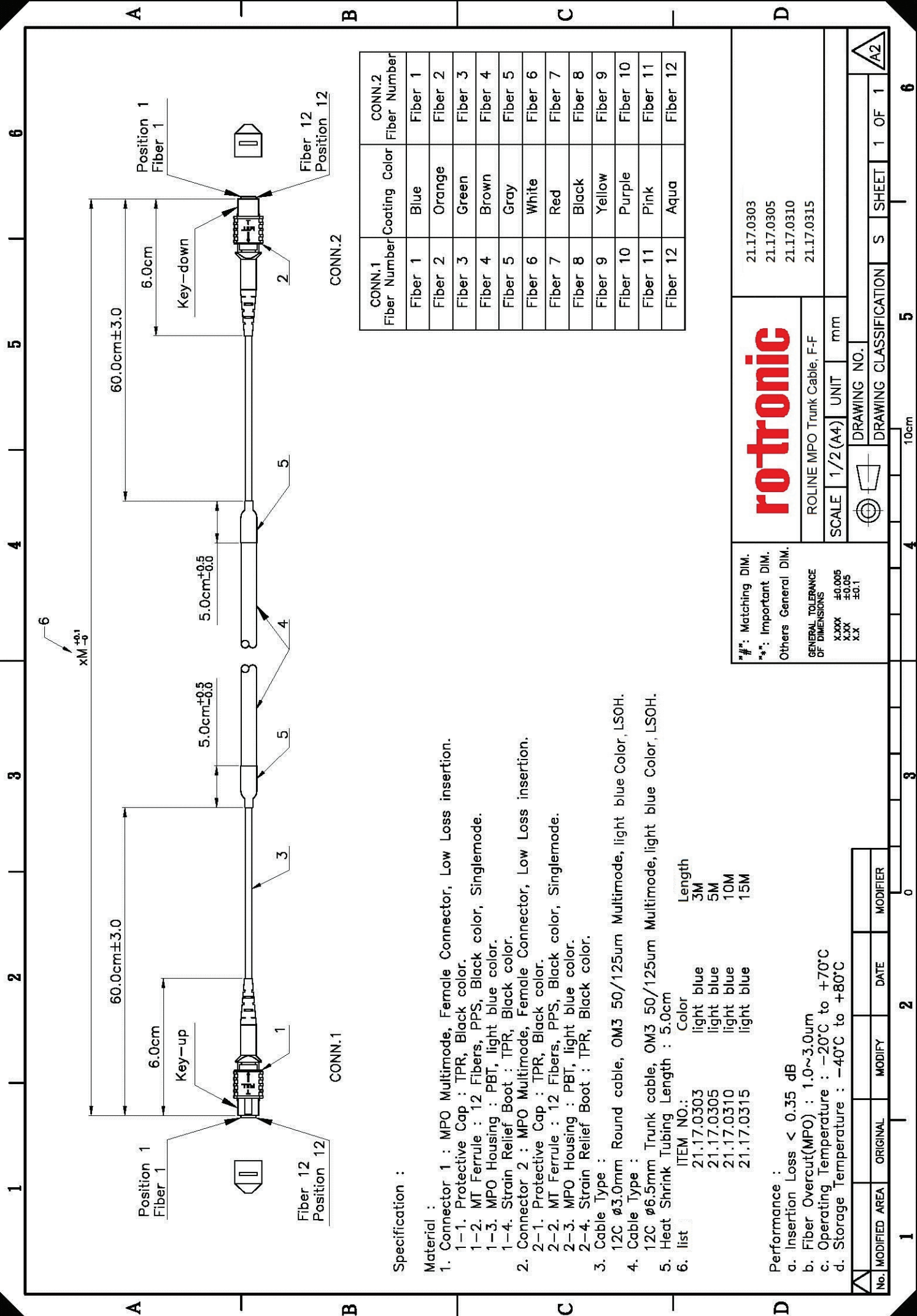
21.17.0303



ROLINE MPO-Trunk-Kabel 50/125 μ m OM3, MPO/MPO, türkis, 3m

ROLINE Câble MPO Trunk 50/125 μ m OM3, MPO / MPO, turquoise, 3m

ROLINE MPO Trunk Cable 50/125 μ m OM3, MPO/MPO, turquoise, 3m



CONN.1 Fiber Number	Coating Color	CONN.2 Fiber Number
Fiber 1	Blue	Fiber 1
Fiber 2	Orange	Fiber 2
Fiber 3	Green	Fiber 3
Fiber 4	Brown	Fiber 4
Fiber 5	Gray	Fiber 5
Fiber 6	White	Fiber 6
Fiber 7	Red	Fiber 7
Fiber 8	Black	Fiber 8
Fiber 9	Yellow	Fiber 9
Fiber 10	Purple	Fiber 10
Fiber 11	Pink	Fiber 11
Fiber 12	Aqua	Fiber 12

Specification :

Material :

1. Connector 1 : MPO Multimode, Female Connector, Low Loss insertion.
 - 1-1. Protective Cap : TPR, Black color.
 - 1-2. MT Ferrule : 12 Fibers, PPS, Black color, Singlemode.
 - 1-3. MPO Housing : PBT, light blue color.
 - 1-4. Strain Relief Boot : TPR, Black color.
2. Connector 2 : MPO Multimode, Female Connector, Low Loss insertion.
 - 2-1. Protective Cap : TPR, Black color.
 - 2-2. MT Ferrule : 12 Fibers, PPS, Black color, Singlemode.
 - 2-3. MPO Housing : PBT, light blue color.
 - 2-4. Strain Relief Boot : TPR, Black color.
3. Cable Type :

12C Ø3.0mm Round cable, OM3 50/125um Multimode, light blue Color, LSOH.	Length
21.17.0303	3M
21.17.0305	5M
21.17.0310	10M
21.17.0315	15M
4. Cable Type :
5. Heat Shrink Tubing Length : 5.0cm
6. list

Performance :

- a. Insertion Loss < 0.35 dB
- b. Fiber Overcut(MPO) : 1.0~3.0um
- c. Operating Temperature : -20°C to +70°C
- d. Storage Temperature : -40°C to +80°C

rotronic

ROLINE MPO Trunk Cable, F-F

SCALE 1/2(A4) UNIT mm

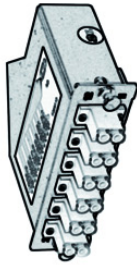
DRAWING NO. 21.17.0303
21.17.0305
21.17.0310
21.17.0315

GENERAL TOLERANCE OF DIMENSIONS
XXX ±0.005
XX ±0.05
X ±0.1

**OM3 LC-LC
(A-B)**



**MPO Module
(12x LC-MPO male)**



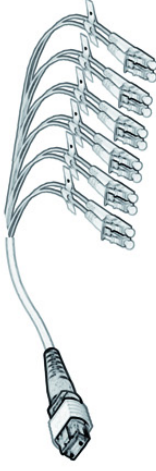
**MPO Trunk Cable
(female-female)**



MPO Coupler



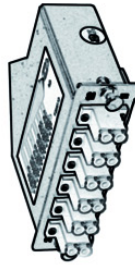
**MPO Fan-Out Cable
(MPO male-12x LC)**



**OM3 LC-LC
(A-B)**



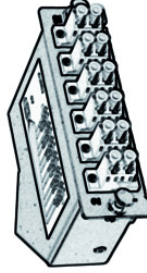
**MPO Module
(12x LC-MPO male)**



**MPO Trunk Cable
(female-female)**



**MPO Module
(MPO male-12x LC)**



**OM3 LC-LC
(A-A)**

