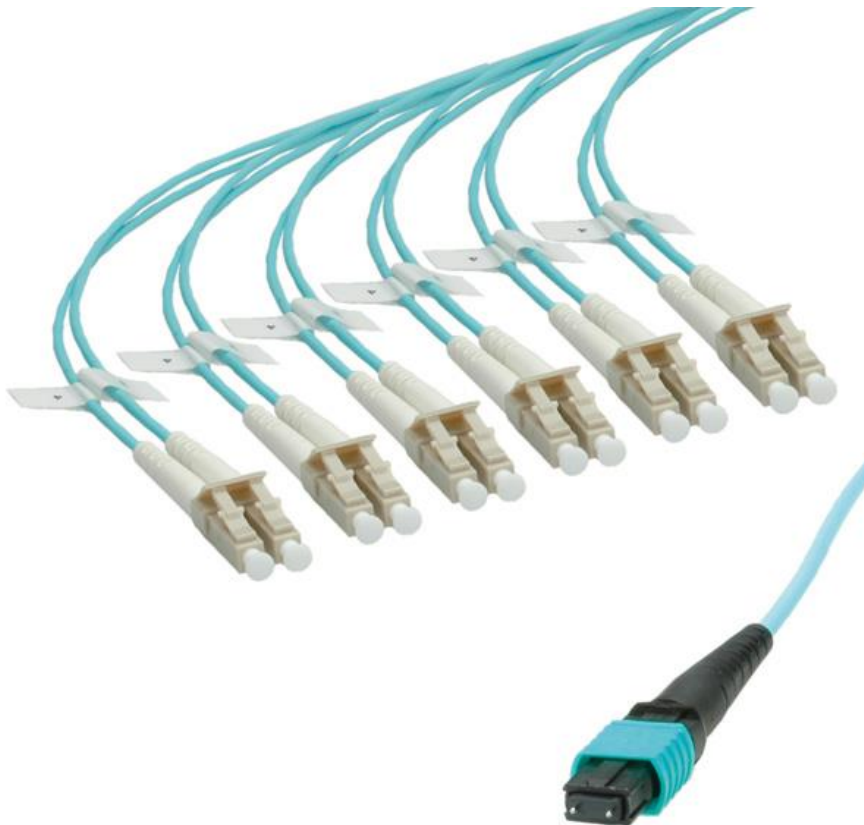




Datenblatt - Fiche technique - Data sheet

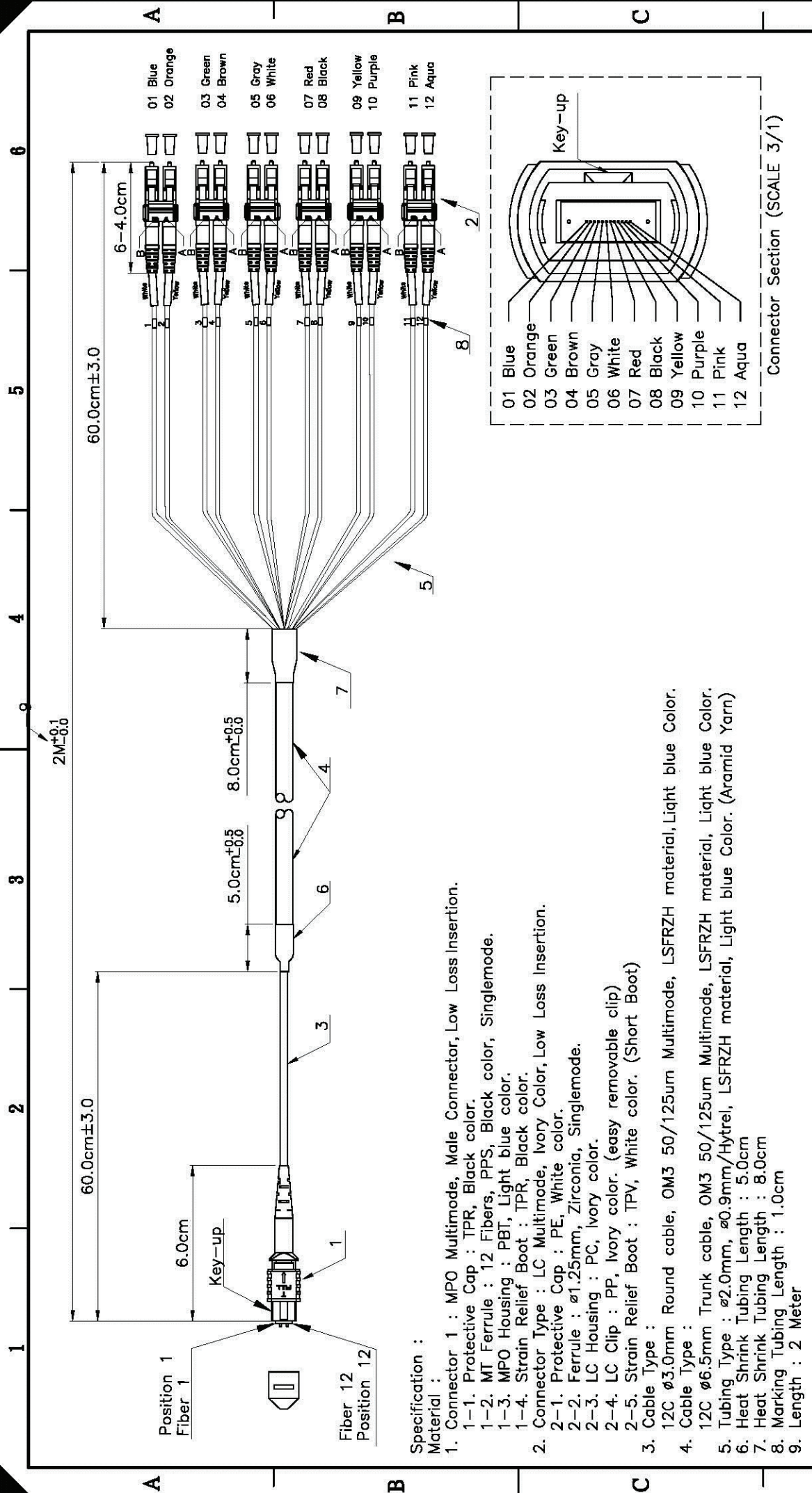
**21.17.0300**



ROLINE MPO-Fanout-Kabel 50/125 $\mu$ m OM3, MPO/12x LC, türkis, 2m

ROLINE Câble MPO Fan-Out 50/125 $\mu$ m OM3, MPO / 12xLC, 2m

ROLINE MPO Fan-Out Cable 50/125 $\mu$ m OM3, MPO/12x LC, turquoise, 2m



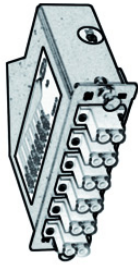
<b>rotronic</b> ITEM NO.: 21.17.0300 ROLINE MPO FAN-OUT CABLEM, MPO/12x LC		DRAWING CLASSIFICATION S SHEET 1 OF 1	
DRAWING 28.DEC.2012 YAN CHECK 28.DEC.2012 MAER APPROVAL 28.DEC.2012 FRANK	DATE NAME 1/1 (A4) UNIT mm DRAWING NO.	SCALE 1/1 (A4) UNIT mm DRAWING NO.	DRAWING CLASSIFICATION S SHEET 1 OF 1
*#: Matching DIM. ***: Important DIM. Others General DIM.	GENERAL TOLERANCE OF DIMENSIONS X.XXX ±0.005 X.XX ±0.05 X.X ±0.1	10cm 5 4 3 2 0	6 5 4 3 2 0

- Specification :**
- Material :**
- Connector 1 : MPO Multimode, Male Connector, Low Loss Insertion.
    - 1-1. Protective Cap : TPR, Black color.
    - 1-2. MT Ferrule : 12 Fibers, PPS, Black color, Singlemode.
    - 1-3. MPO Housing : PBT, Light blue color.
    - 1-4. Strain Relief Boot : TPR, Black color.
  - Connector Type : LC Multimode, Ivory Color, Low Loss Insertion.
    - 2-1. Protective Cap : PE, White color.
    - 2-2. Ferrule : ø1.25mm, Zirconia, Singlemode.
    - 2-3. LC Housing : PC, Ivory color.
    - 2-4. LC Clip : PP, Ivory color. (easy removable clip)
    - 2-5. Strain Relief Boot : TPV, White color. (Short Boot)
  - Cable Type :
    - 12C ø3.0mm Round cable, OM3 50/125um Multimode, LSRFZH material, Light blue Color.
  - Cable Type :
    - 12C ø6.5mm Trunk cable, OM3 50/125um Multimode, LSRFZH material, Light blue Color.
  - Tubing Type : ø2.0mm, ø0.9mm/Hytrel, LSRFZH material, Light blue Color. (Aramid Yarn)
  - Heat Shrink Tubing Length : 5.0cm
  - Heat Shrink Tubing Length : 8.0cm
  - Marking Tubing Length : 1.0cm
  - Length : 2 Meter
- Performance :**
- Insertion Loss :
    - LC Type : < 0.50 dB
    - MPO Type : < 0.35 dB
  - Fiber Extension(LC) : -0.05um < H < +0.05um
  - Fiber overcut(MPO) : 1.0~3.0um
  - Apex Offset : < 50um
  - Operating Temperature : -20°C to +70°C
  - Storage Temperature : -40°C to +80°C

**OM3 LC-LC  
(A-B)**



**MPO Module  
(12x LC-MPO male)**



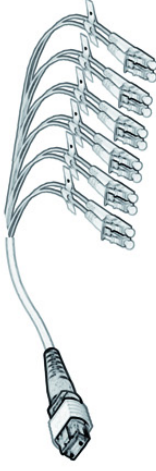
**MPO Trunk Cable  
(female-female)**



**MPO Coupler**



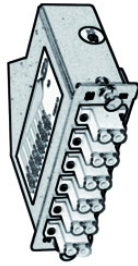
**MPO Fan-Out Cable  
(MPO male-12x LC)**



**OM3 LC-LC  
(A-B)**



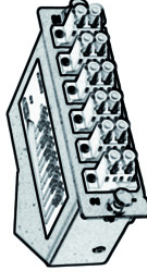
**MPO Module  
(12x LC-MPO male)**



**MPO Trunk Cable  
(female-female)**



**MPO Module  
(MPO male-12x LC)**



**OM3 LC-LC  
(A-A)**

