



Datenblatt - Fiche technique - Data sheet

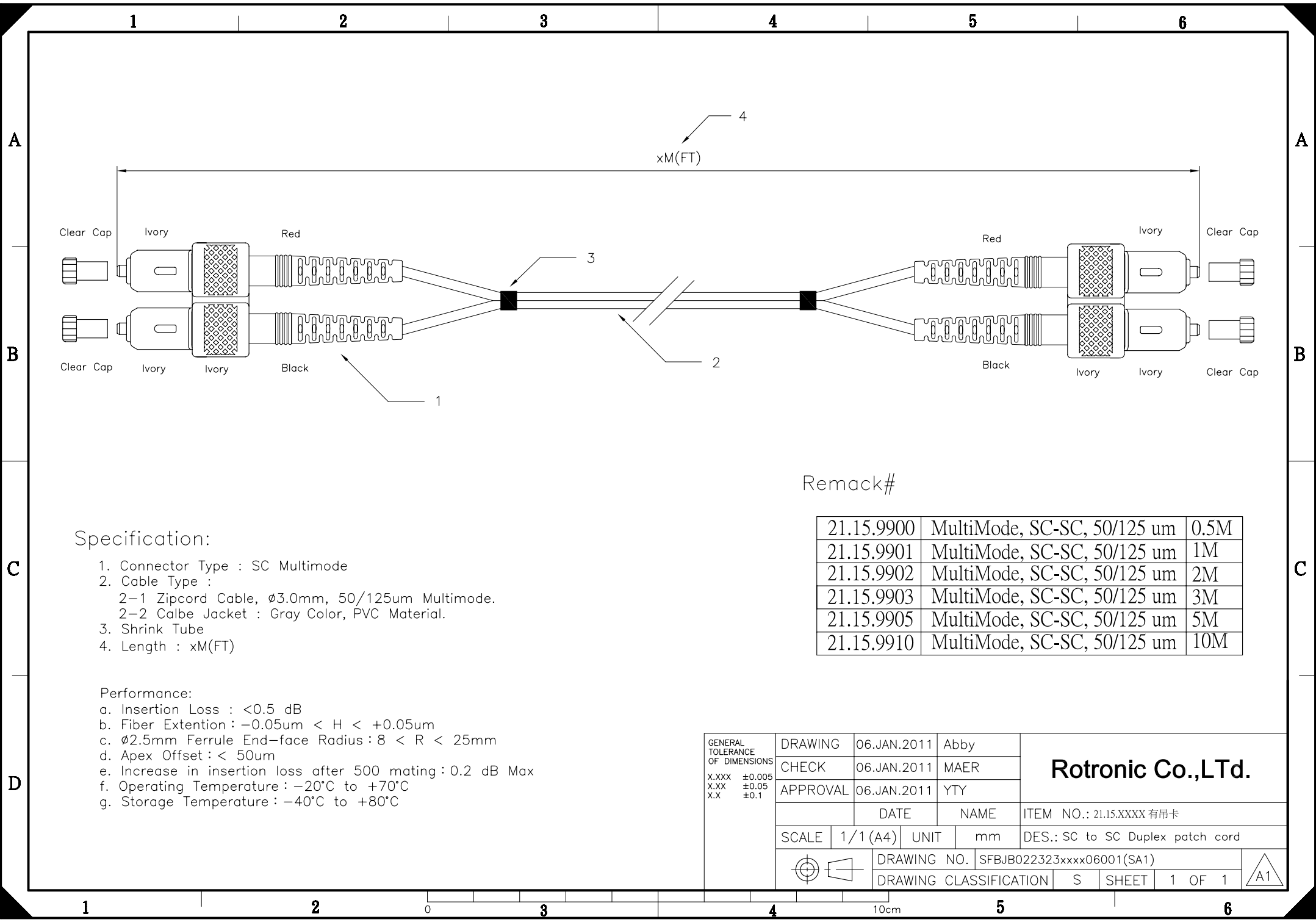
21.15.9902



ROLINE LWL-Kabel 50/125 μ m SC/SC, grau, 2m

ROLINE Câble patch FO 50/125 μ m SC/SC, gris, 2m

ROLINE Fibre Optic Jumper Cable 50/125 μ m SC/SC, grey, 2 m



Remack#

Specification:

- 1. Connector Type : SC Multimode
- 2. Cable Type :
 - 2-1 Zipcord Cable, ϕ 3.0mm, 50/125um Multimode.
 - 2-2 Calbe Jacket : Gray Color, PVC Material.
- 3. Shrink Tube
- 4. Length : xM(FT)

Performance:

- a. Insertion Loss : <0.5 dB
- b. Fiber Extention : $-0.05\mu\text{m} < H < +0.05\mu\text{m}$
- c. ϕ 2.5mm Ferrule End-face Radius : $8 < R < 25\text{mm}$
- d. Apex Offset : < 50 μm
- e. Increase in insertion loss after 500 mating : 0.2 dB Max
- f. Operating Temperature : -20°C to $+70^{\circ}\text{C}$
- g. Storage Temperature : -40°C to $+80^{\circ}\text{C}$

21.15.9900	MultiMode, SC-SC, 50/125 um	0.5M
21.15.9901	MultiMode, SC-SC, 50/125 um	1M
21.15.9902	MultiMode, SC-SC, 50/125 um	2M
21.15.9903	MultiMode, SC-SC, 50/125 um	3M
21.15.9905	MultiMode, SC-SC, 50/125 um	5M
21.15.9910	MultiMode, SC-SC, 50/125 um	10M

GENERAL TOLERANCE OF DIMENSIONS X.XXX \pm 0.005 X.XX \pm 0.05 X.X \pm 0.1	DRAWING	06.JAN.2011	Abby	Rotronic Co.,LTd.
	CHECK	06.JAN.2011	MAER	
	APPROVAL	06.JAN.2011	YTY	
		DATE	NAME	ITEM NO.: 21.15.XXXX 有吊卡
SCALE	1/1 (A4)	UNIT	mm	DES.: SC to SC Duplex patch cord
		DRAWING NO. SFBJB022323xxxx06001(SA1)		
		DRAWING CLASSIFICATION	S	