



Datenblatt - Fiche technique - Data sheet

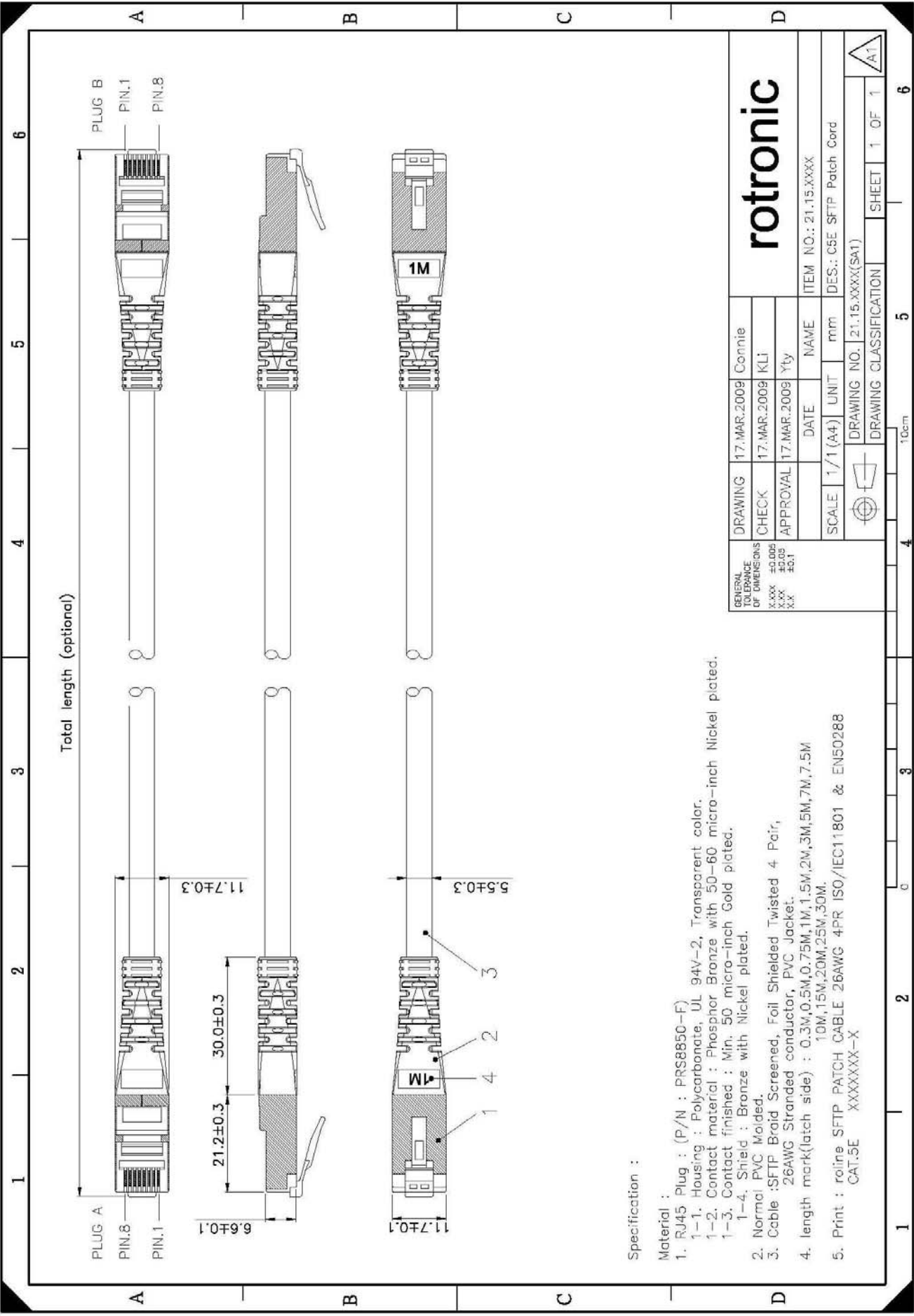
21.15.0342



ROLINE S/FTP-Patchkabel konf. Kategorie 5e, gelb, 2,0 m

Cordon ROLINE Cat.5e S/FTP AWG26, jaune, 2,0 m

ROLINE S/FTP Patch Cord Cat.5e, yellow, 2.0 m



Total length (optional)

Specification :

Material :

1. RJ45 Plug : (P/N : PRS8850-F)
 - 1-1. Housing : Polycarbonate, UL 94V-2, Transparent color.
 - 1-2. Contact material : Phosphor Bronze with 50-60 micro-inch Nickel plated.
 - 1-3. Contact finished : Min. 50 micro-inch Gold plated.
 - 1-4. Shield : Bronze with Nickel plated.
2. Normal PVC Molded.
3. Cable :SFTP Braid Screened, Foil Shielded Twisted 4 Pair, 26AWG Stranded conductor, PVC Jacket.
4. length mark(latch side) : 0.3M,0.5M,0.75M,1M,1.5M,2M,3M,5M,7M,7.5M,10M,15M,20M,25M,30M.
5. Print : roline SFTP PATCH CABLE 26AWG 4PR ISO/IEC11801 & EN50288
CAT:5E XXXXXX-X

| | | | | | |
|---------------------------------|--------|-----------------------------|-------------|---------------------------|----|
| GENERAL TOLERANCE OF DIMENSIONS | | DRAWING | 17.MAR.2009 | Connie | |
| X.XXX | ±0.005 | CHECK | 17.MAR.2009 | KLI | |
| X.XX | ±0.03 | APPROVAL | 17.MAR.2009 | Yty | |
| X.X | ±0.1 | | DATE | NAME | |
| | | SCALE | 1/1 (A4) | UNIT | mm |
| | | DRAWING NO. 21.15.XXXX(SA1) | | DRAWING CLASSIFICATION | |
| | | ITEM NO.: 21.15.XXXX | | DES.: C5E SFTP Patch Cord | |
| | | DRAWING NO. 21.15.XXXX(SA1) | | SHEET 1 OF 1 | |

rotronic

Remark#

| | | | |
|--------------|---|--------------|---|
| 21.1.15.0300 | ROLINE S/FTP Cable Cat.5e, grey, 0.5 | 21.1.15.0382 | ROLINE S/FTP Cable Cat.5e, yellow, 0.5m |
| 21.1.15.0301 | ROLINE S/FTP Cable Cat.5e, grey, 1.0 | 21.1.15.0383 | ROLINE S/FTP Cable Cat.5e, green, 0.5m |
| 21.1.15.0302 | ROLINE S/FTP Cable Cat.5e, grey, 2.0 | 21.1.15.0384 | ROLINE S/FTP Cable Cat.5e, blue, 0.5m |
| 21.1.15.0307 | ROLINE S/FTP Cable Cat.5e, grey, 7.0 | 21.1.15.0385 | ROLINE S/FTP Cable Cat.5e, black, 0.5m |
| 21.1.15.0310 | ROLINE S/FTP Cable Cat.5e, grey, 10m | 21.1.15.0721 | ROLINE S/FTP Cable Cat.5e, red, 10m |
| 21.1.15.0315 | ROLINE S/FTP Cable Cat.5e, grey, 15m | 21.1.15.0722 | ROLINE S/FTP Cable Cat.5e, yellow, 10m |
| 21.1.15.0320 | ROLINE S/FTP Cable Cat.5e, grey, 20m | 21.1.15.0723 | ROLINE S/FTP Cable Cat.5e, green, 10m |
| 21.1.15.0331 | ROLINE S/FTP Cable Cat.5e, red, 1.0m | 21.1.15.0724 | ROLINE S/FTP Cable Cat.5e, blue, 10m |
| 21.1.15.0332 | ROLINE S/FTP Cable Cat.5e, yellow, 1.0m | 21.1.15.0725 | ROLINE S/FTP Cable Cat.5e, black, 10m |
| 21.1.15.0333 | ROLINE S/FTP Cable Cat.5e, green, 1.0m | 21.1.15.0731 | ROLINE S/FTP Cable Cat.5e, red, 15m |
| 21.1.15.0334 | ROLINE S/FTP Cable Cat.5e, blue, 1.0m | 21.1.15.0732 | ROLINE S/FTP Cable Cat.5e, yellow, 15m |
| 21.1.15.0335 | ROLINE S/FTP Cable Cat.5e, black, 1.0m | 21.1.15.0733 | ROLINE S/FTP Cable Cat.5e, green, 15m |
| 21.1.15.0341 | ROLINE S/FTP Cable Cat.5e, red, 2.0m | 21.1.15.0734 | ROLINE S/FTP Cable Cat.5e, blue, 15m |
| 21.1.15.0342 | ROLINE S/FTP Cable Cat.5e, yellow, 2.0m | 21.1.15.0735 | ROLINE S/FTP Cable Cat.5e, black, 15m |
| 21.1.15.0343 | ROLINE S/FTP Cable Cat.5e, green, 2.0m | 21.1.15.0741 | ROLINE S/FTP Cable Cat.5e, red, 20m |
| 21.1.15.0344 | ROLINE S/FTP Cable Cat.5e, blue, 2.0m | 21.1.15.0742 | ROLINE S/FTP Cable Cat.5e, yellow, 20m |
| 21.1.15.0345 | ROLINE S/FTP Cable Cat.5e, black, 2.0m | 21.1.15.0743 | ROLINE S/FTP Cable Cat.5e, green, 20m |
| 21.1.15.0351 | ROLINE S/FTP Cable Cat.5e, red, 3.0m | 21.1.15.0744 | ROLINE S/FTP Cable Cat.5e, blue, 20m |
| 21.1.15.0352 | ROLINE S/FTP Cable Cat.5e, yellow, 3.0m | 21.1.15.0745 | ROLINE S/FTP Cable Cat.5e, black, 20m |
| 21.1.15.0353 | ROLINE S/FTP Cable Cat.5e, green, 3.0m | | |
| 21.1.15.0354 | ROLINE S/FTP Cable Cat.5e, blue, 3.0m | | |
| 21.1.15.0355 | ROLINE S/FTP Cable Cat.5e, black, 3.0m | | |
| 21.1.15.0361 | ROLINE S/FTP Cable Cat.5e, red, 5.0m | | |
| 21.1.15.0362 | ROLINE S/FTP Cable Cat.5e, yellow, 5.0m | | |
| 21.1.15.0363 | ROLINE S/FTP Cable Cat.5e, green, 5.0m | | |
| 21.1.15.0364 | ROLINE S/FTP Cable Cat.5e, blue, 5.0m | | |
| 21.1.15.0365 | ROLINE S/FTP Cable Cat.5e, black, 5.0m | | |
| 21.1.15.0381 | ROLINE S/FTP Cable Cat.5e, red, 0.5m | | |

CATEGORY 5E SF/UTP PATCH CABLE 4 PAIR



Category 5E SF/UTP cables are designed to meet the most advanced SF/UTP cable applications. Tested to 100 MHz, the guaranteed performance of this cable meets the ISO/IEC 11801 and EN50288 requirements for PS-NEXT, attenuation, return loss, attenuation-to-crosstalk ratio (ACR) and impedance, making it ideal for high-end transmission links supporting today's networking protocols

CONSTRUCTION

26 AWG bare copper wire insulated with polyethylene. Two insulated conductors twisted together to form a pair and four such pairs cabled to form the basic unit jacketed with flame-retardant PVC.

STANDARDS

| | |
|---------------|---------------|
| International | ISO/IEC 11801 |
| European | EN50288 |

FLAME RATING

UL 444 CM, CMR

APPLICATIONS

Category 5E SF/UTP cable is intended for high speed data applications including:

IEEE 802.3 1000BASE-T, 10BASE-T, 155 Mb/s ATM, 4/16 Mb/s Token Ring

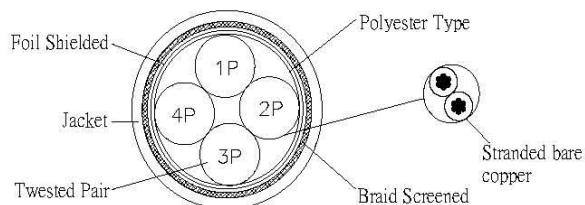
FEATURES

- Specified and tested to 100 MHz
- Small, round design pairs

BENEFITS

- Reliably supports today's network protocols
- Reduced installation costs and maintenance
- Lower Bit Error Rates, increases network efficiency and uptime

CATEGORY 5E SF/UTP PATCH CABLE 4 PAIR



Construction

Twisted Pairs Color Code:

1. PAIR 1: Blue, White/Blue
2. PAIR 2: Orange, White/Orange
3. PAIR 3: Green; White/Green
4. PAIR 4: Brown; White/Brown

Component

1. Conductor: AWG 26
2. Insulators: HDPE (Min. Thickness 0.153, Min. Avg. thickness 0.178)
3. Insulators Diameter: 0.80~0.83mm
4. Mylar Tape: 20 x 0.02 ± 0.01
5. Al-Mylar Tape: 20 x 0.038 ± 0.002
6. Copper Brad: 0.10 x 80
7. Jacket: 75°C PVC (Min. Thickness 0.58, Min. Avg. thickness 0.46)
8. Jacket Diameter: 5.5 ± 0.2mm

Marking

SF/UTP PATCH CABLE 26AWG 4PR 75°C (UL) E178558 CM rated
ISO/IEC11801 & EN50288 CAT.5E XXXXXX-X
or customization

Physical Characters

Un-aged:

1. Tensile strength: Polyolefin 2400PSI, Jacket (PVC) 2000PSI
2. Elongation: Polyolefin 300% min. Jacket (PVC) 100% min

After Aging:

1. Tensile strength: Polyolefin 75%min. Jacket (PVC) 85% min
2. Elongation: Polyolefin 75%min. Jacket (PVC) 50% min

Electric Characters

1. Voltage rating: 300V
2. Temperature rating: 75°C
3. Dielectric strength: DC 2.5 KV / 2sec. or AC1.75 KV / 2sec.
4. Mutual Capacitance: 5.6 nF/100M nom.
5. Pair to ground : 330pF/100m max
6. Conductor DC resistance: 142 Ohms/km max. at 20°C.
7. DC Resistance Unbalance: 5% max.
8. Characteristic Impedance: 100±15 Ohms 1~100MHz
9. Propagation Delay skew: 45ns/100m max. 1~100MHz
10. Velocity of Propagation: 70%

| FREQ MHz | Attenuation (max. dB/100m) | NEXT (min. dB) | RL (min. dB at 20°C) | PSNEXT (min. dB) | ELFEXT (min. dB) | PSELFEXT (min. dB) | DELAY (max. ns at 20°C) |
|-------------|-------------------------------|-------------------|-------------------------|---------------------|---------------------|-----------------------|----------------------------|
| 1 | 2.9 | 65.3 | 20.0 | 62.3 | 63.0 | 60.8 | 570.2 |
| 4 | 5.9 | 56.3 | 23.0 | 53.3 | 51.7 | 48.7 | 552.0 |
| 8 | 8.4 | 51.8 | 24.5 | 48.8 | 45.7 | 42.7 | 546.7 |
| 10 | 9.4 | 50.3 | 25.0 | 47.3 | 43.8 | 40.8 | 545.0 |
| 16 | 11.8 | 47.2 | 25.0 | 44.4 | 39.7 | 36.7 | 543.0 |
| 20 | 13.3 | 45.8 | 25.0 | 42.8 | 37.7 | 34.7 | 542.0 |
| 25 | 15.0 | 44.3 | 24.2 | 41.3 | 35.8 | 32.8 | 541.2 |
| 31.25 | 16.8 | 42.9 | 23.3 | 39.9 | 33.9 | 30.9 | 540.4 |
| 62.50 | 24.5 | 36.4 | 20.7 | 35.4 | 27.8 | 24.8 | 538.6 |
| 100 | 31.7 | 35.3 | 19.0 | 32.3 | 23.8 | 20.8 | 538.0 |
| 200 | - | - | - | - | - | - | - |
| 250 | - | - | - | - | - | - | - |