

SN0108A / SN0116A / SN0132 / SN0148

8/16/32/48-Port Serial Console Server

- The SN series of serial console servers integrate cutting edge technologies with secure enterprise communications. Available in 8-, 16-, 32- and 48-port models, the serial console server offers both in-band and out-of-band remote serial console access to servers and network devices, via a direct Telnet/SSH client or an applet viewer. SN works in tandem with the Power Over the NET™ remote power management system. Both can be managed with CC2000 management software to provide centralized data center management and integrated power management. With their comprehensive features, SN series of serial console servers help maximize IT productivity, provide scalability and reduce operational costs.

The serial console server is used to connect serial devices to the Ethernet network to meet the needs of demanding applications in industrial control, data acquisition, environment monitoring, and remote facility and equipment management. It offers versatile operation modes including Real COM Port, TCP Server/Client, UDP Server/Client, Serial Tunnel and Virtual Modem. It helps transform the capabilities of legacy serial devices to take advantage of the TCP/IP network to allow remote access, configuration, and management of the serial devices from anywhere in the world over the Internet.

SN series is a complete secure remote access and control solution. Access rights and privilege control can be applied to individual ports. Consolidated authentication simplifies password management. Data encryption is provided. Logging and alerting helps speed resolution of issues and mitigates risk. Enhanced security functions ensure the compliance of internal security mandates. The ease of use, accessibility and manageability of the SN series serial console servers enables a quick response to changing demands and helps meet ultimate business goals.

SN0116A Front View



SN0116A Rear View



Features

System Accessibility and Availability

- Secure in-band and out-of-band network access to serial consoles
- In-band access of Ethernet
- Browser access with an intuitive GUI
- Terminal-based access with a menu-driven UI
- Out-of-band access of dial-up modem
- Modem dial-in/dial-back/dial-out
- Front access USB ports for USB storage or for USB-based PC cards
- Laptop USB Console (LUC) port for extra local console access via laptop computer
- Dual Ethernet ports for failover or for dual IP addresses access
- Dual power supply

Serial Console Management

- Convenient and simple access via browser or Telnet/SSH client
- Port access via Telnet/SSH client and third-party client such as PuTTY
- Direct port access from Telnet client – bypassing login to SN
- Convenient port access via the applet serial viewer from SN Web GUI
- Selectable Telnet or SSH for the serial viewer
- Selectable ActiveX or Java for the serial viewer
- Comprehensive viewer function – Copy/paste, logging, data import, Macro, broadcast and Message Board
- Sun Solaris ready – Sun “break-safe”
- Alert String
- Command filter – administrators can define what commands cannot be executed by users
- Data buffering
- Multiple users simultaneously access to the same port – up to 16 connections per port.
- Selectable mode for multiple simultaneous access – Exclusive/ Occupy/Share mode
- Integrated with Power Over the NET™ product for port and power outlet association

Security

- SSH and SSL support
- Supports CA certificates
- Configurable user permissions for port access and control
- Configurable group permission for port access and control
- Local and remote authentication and logging
- Third-party authentication – support RADIUS, TACACS+, LDAP/AD, and Kerberos
- IP filtering and MAC filtering

System Management

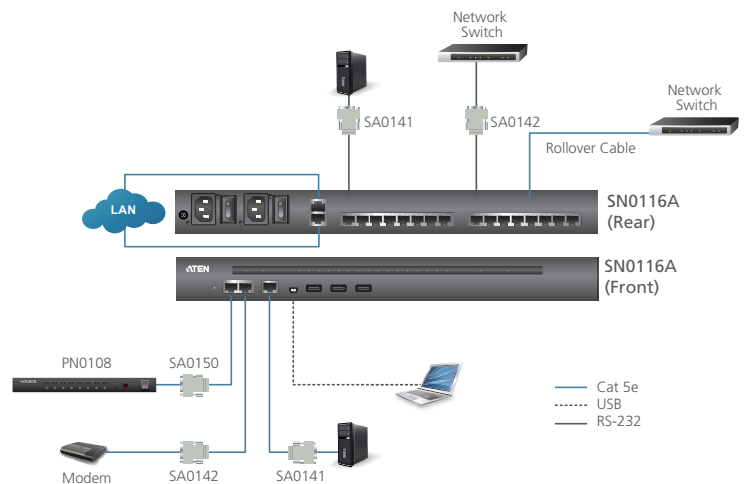
- System configuration via Web browser of HTTP/HTTPS, Telnet/SSH client and local console
- System log and event logging
- Comprehensive logging and event notification
- ATEN Log server and Syslog server
- SNMP agent
- Event notification – support notification of SMTP email, SNMP Trap, and SMS (with additional mobile device)
- Backup/restore system configuration
- Firmware upgradeable
- Multi-browser support – Internet Explorer, Chrome, Firefox, Safari, Opera, Mozilla, and Netscape
- Customizable global time zone
- NTP for time server synchronization
- DHCP for dynamic IP address assignment
- IPv6 support
- Integrated with CC2000 for data center centralized management

Serial Device Management

- Versatile serial operating modes – support Real COM, TCP Server, TCP Client, UDP, Serial Tunnel and Virtual Modem
- 128-bit/256-bit SSL encryption for Real COM, TCP Server, TCP Client, Serial Tunnel and Virtual Modem
- Real COM driver for Windows 2000 or higher and Windows Server 2003/2008
- Real TTY driver for Linux
- Fixed TTY driver for UNIX

Language

- Web-based GUI multi-language – available for German, Japanese, Korean, Russian, Simplified Chinese and Traditional Chinese



Specification

Function		SN0108A	SN0116A	SN0132	SN0148
Serial Connections		8	16	32	48
Connectors	Serial	8 x RJ-45 (F)	16 x RJ-45 (F)	32 x RJ-45 (F)	48 x RJ-45 (F)
	LAN	2 x RJ-45 (F)			
	Power	2 x 3-prong AC Socket			
	PON	1 x RJ-45 (F)			
	Modem	1 x RJ-45 (F)			
	USB	3 x USB Type A (F)			
	USB Console (LUC)	1 x Mini USB			
	Local Console	1 x RJ-45 (F)			
Switches	Reset	1 x Recessed Pushbutton			
	Power	2 x Rocker Switch			
LEDs	Serial Port Status	8 (Green)	16 (Green)	32 (Green)	48 (Green)
	10 / 100 / 1000 Mbps	2 (Red / Orange / Green)			
	Power	2 (Blue)			
I/P Rating		100-240V~, 1A, 50/60Hz			
Power Consumption		110V/22.1W; 220V/21.8W	110V/22.9W; 220V/22.6W	120V/35W; 230V/37W	120V/42W; 230V/45W
Environment	Operating Temp.	0–50° C			
	Storage Temp.	-20–60° C			
	Humidity	0 – 80% RH, Non-Condensing			
Physical Properties	Housing	Metal			
	Weight	4.35 kg	4.38 kg	4.84 kg	4.92 kg
	Dimensions (L x W x H)	43.72 x 32.98 x 4.40 cm (19" 1U)	43.72 x 32.98 x 4.40 cm (19" 1U)	43.72 x 32.77 x 4.40 cm (19" 1U)	43.72 x 32.77 x 4.40 cm (19" 1U)

